

**Summary Billing Statement
OCTOBER 2017**

Summary Account Number 13 011 504 01

Invoice number: 503100034572

13 011 504 01

TWP OF MONTCLAIR
MONTCLAIR TWP OF
50 S FULLERTON AVE
MONTCLAIR NJ 07042-2629

1 855-BIZ-PSEG (249-7734)
Emergencies 24 hours/7days
Business customer service
7 AM - 8 PM Mon - Fri
7 AM - 5 PM Sat

Visit our website
www.pseg.com

Inquiries by mail
PSE&G
PO Box 14444
New Brunswick NJ 08906-4444

Important Dates
Your payment is due
January 08, 2018

Account Summary for 19 Accounts

PSE&G balance from last bill	\$53,208.69
Current PSE&G - Gas	2,544.18
Current PSE&G - Electric	7,383.15
Current PSE&G - Unmetered Charges	1,330.04
Meter Product Charges	6.00
DIRECT ENERGY BUSINESS, LLC Electric Charges	16,977.59
TriEagle Energy, LP Electric Charges	412.47
Total Amount Due On Jan 8, 2018	\$81,862.12

SUMMARY

1301150401 0081862121 00818621213



**To help us make things
work for you. Please return this
portion with your payment. Make
checks payable to PSE&G. Do
not write on, staple, paper
clip or tape payment to the
coupon. Be sure payment
address shows through window.**

TWP OF MONTCLAIR
MONTCLAIR TWP OF
50 S FULLERTON AVE
MONTCLAIR NJ 07042-2629

13 011 504 01

Total Amount Due On Jan 8, 2018 **\$81,862.12**

PSE&G CO
PO BOX 14444
NEW BRUNSWICK NJ 08906-4444



\$

Amount enclosed

Electronic Check Conversion

When you pay by check, you authorize PSE&G to use your check to make a one-time electronic fund transfer from your account. If you do not wish to participate, call 1-800-436-PSEG.

Electric & Gas Rate Information

For news about PSE&G's rate filing and upcoming public hearings visit www.pseg.com/pseandgfilings

Customer Service Centers

Open Monday through Friday, during the hours noted.

Bayonne, 608 Broadway	8am to 4:00pm
Burlington, 501 High Street	8am to 4:00pm
Camden, 1 Port Center	8am to 4:00pm
Elizabeth, 550 N. Broad Street	8am to 4:00pm
Hackensack, 214 Hudson Street	8am to 4:00pm
Hoboken, 615 Washington Street	8am to 4:00pm
Jersey City, 35 Journal Square (Corner of Bergen Ave. & Newkirk St.)	8am to 4:00pm
Newark, 80 Park Plaza	8am to 4:00pm
New Brunswick, 317 George St.	8am to 4:00pm
West Orange, 59 Main St.	8am to 4:00pm
Passaic, 651 Main Ave	8am to 4:00pm
Paterson, 301 Main St (30 Clark St)	8am to 4:00pm
Perth Amboy, 286 State St.	8am to 4:00pm
Plainfield, 120 West Seventh Street	8am to 4:00pm
Trenton, 28 West State Street	8am to 4:00pm
Union City, 4808 Bergenline Avenue	8am to 4:00pm

Bill Form Definitions

Service Charge: A fixed monthly charge related to metering, billing and account maintenance.

Distribution Charges (Gas): Charges related to delivering gas through pipes from supply sources to the customer. These charges include a therm component, and in November through March on certain rate schedules, also include a demand component.

Bill Form Definitions (continued)

Balancing Charge (Gas): This charge reflects storage related costs associated with winter gas use. This charge is only applicable in the billing months of November through March.

Demand (Gas): The highest average daily use of gas over the most recent billing months of November to March.

Supply (Gas): Charges for customers who do not choose a competitive gas supplier are called Basic Gas Supply Service (BGSS). The charges include the cost of the natural gas as well as the cost of interstate delivery of the gas to New Jersey.

Distribution Charges (Electric): Charges related to delivering electricity through wires from supply sources to the customer. These charges include both kilowatthour (kWh) and demand (kW) components.

Measured Demand (Electric): The maximum use of electricity at any time during a month or monthly time period (on or off-peak).

Annual Demand (Electric):

(For Rate HTS): The highest Measured Demand over the most recent 12 months.

(For Rates MD, ED, LPLS, LPLP): The highest Measured Demand in any time period in the current month.

Summer Demand (Electric): The Measured Demand (excluding off-peak) in each billing month of June through September.

Societal Benefits: This charge recovers the cost of government mandated programs designed to achieve public policy goals, such as energy conservation.

Securitization Transition: This charge recovers costs and associated taxes for transition bonds and for BGS transition bonds collected by PSE&G as servicer on behalf of PSE&G Transition Funding LLC and PSE&G Transition Funding II LLC, respectively.

Supply Capacity (Electric): A customer's share of the generation and transmission facilities, measured in kilowatts (kW), which must be procured to serve the system annual peak usage. The customer's share is calculated from the customer's peak usage in the prior year's summer. For new customers without prior summer usage the share is calculated from connected load.

Supply (Electric): Charges for customers who do not choose a competitive electric supplier are called Basic Generation Service (BGS). The charges include the energy as well as the generation and transmission facilities necessary to produce and transmit the energy.

TDD number for the hearing impaired 1 800 225-0072

Location Summary

Name	Service at	Account number	Current charges	Account Balance
B O E MONTCLAIR	25 MAPLE AVE GLENFIELD MONTCLAIR TWP NJ	42 455 184 05	6,056.35	6,056.35
TWP OF MONTCLAIR	141 PARK ST HIGH SCH MONTCLAIR TWP NJ	42 456 005 00	5,472.03	16,524.77
MONTCLAIR BD OF ED	CHAMPLAIN TER O/B-FIELD MONTCLAIR TWP NJ	73 378 370 03	5.86	17.31
B O E MONTCLAIR	32 CEDAR AVE NISHUANE MONTCLAIR TWP NJ	73 378 371 00	2,295.59	6,335.91
B O E MONTCLAIR	20 EDMONT RD EDMONT MONTCLAIR TWP NJ	73 378 372 08	1,261.73	4,199.73
B O E MONTCLAIR	22 VALLEY RD BD OF ED MONTCLAIR TWP NJ	73 378 373 05	2,576.34	8,136.83
B O E MONTCLAIR	299 N FULLERTON AVE WATCHUNG MONTCLAIR TWP NJ	73 378 374 02	1,864.59	6,550.40
MONTCLAIR TWP OF	173 BELLEVUE AVE GAS ACCT MONTCLAIR TWP NJ	73 378 375 18	78.19	127.03
MONTCLAIR TWP OF	28 ESSEX AVE MONTCLAIR TWP NJ	73 378 376 07	1,139.62	6,912.24
B O E MONTCLAIR	603 GROVE ST N W ELEM MONTCLAIR TWP NJ	73 378 377 04	3,058.25	8,846.50
MONTCLAIR TWP OF	MIDLAND AVE MONTCLAIR TWP NJ	73 378 378 01	4.23	12.55
MONTCLAIR TWP OF	CHURCH ST & NW COR MONTCLAIR TWP NJ	73 378 379 09	10.31	35.97
TWP OF MONTCLAIR	141 PARK ST GAS ACCT MONTCLAIR TWP NJ	73 378 380 18	149.94	426.92
MONTCLAIR TWP OF	41 CHESTNUT ST ARENA MONTCLAIR TWP NJ	73 378 381 07	26.33	90.05
MONTCLAIR TWP OF	54 ORANGE RD MONTCLAIR TWP NJ	73 378 382 04	547.36	6,061.42
TWP OF MONTCLAIR	32 CEDAR AVE MONTCLAIR TWP NJ	73 378 383 01	112.99	335.52
B O E MONTCLAIR	176 N FULLERTON AVE RENA MID MONTCLAIR TWP NJ	73 378 384 09	2,259.00	6,196.66
B O E MONTCLAIR	VARIOUS LOCATIONS LTG MONTCLAIR TWP NJ	73 378 385 06	1,701.31	4,899.43
MONTCLAIR TWP OF	176 N FULLERTON AVE MONTCLAIR TWP NJ	73 378 386 03	33.41	96.53
Total Amount For 19 Accounts			\$28,653.43	\$81,862.12

25 MAPLE AVE GLENFIELD
 MONTCLAIR TWP NJ

Account number for this location 42 455 184 05

Your next meter reading is
 scheduled for January 11

Meter reading scheduling
 1 800 436-PSEG(7734)

Account Summary for this location

PSE&G balance from last bill	\$72,604.20 CR
Current Charges	6,056.35
Credit balance	\$66,547.85 CR

PSE&G Gas

Account number for this location 42 455 184 05

Usage	Meter 3832932
Actual reading Oct 13	121332
Actual reading Sep 15 ✓	121247
Difference	85
Conversion to CCF	x 1.0120
CCF total	86.020
Conversion to therms	x 1.03300
Total therms	88.859

Gas Deliveries	
Bill period deliveries	631.316
Imbalance*	542.457 -

*See text

Charges	PoD ID: PG000010408143545191	Rate - LVG
Delivery		
Service charge		\$103.43
Distribution charge	88.859 therms @ \$0.0472659	4.20
Societal Benefits	88.859 therms @ \$0.04625310	4.11
Total Delivery		\$111.74
Total gas charges		\$111.74

A history of PSE&G's monthly Basic Gas Supply Service (BGSS) prices are located on our website at www.pseg.com.

* The Imbalance of 542.457- will be applied to your Gas Deliveries in the month of December. The amount and month applied may differ if you are switching third party suppliers or your account requires an adjustment.

PSE&G Electric

Account number for this location 42 455 184 05

Usage	Meter 9206404
Reading Oct 10	
On-Peak actual	5499
Off-Peak1	
Off-Peak2	
Reading Sep 15	
On-Peak actual ✓	5365
Off-Peak1	
Off-Peak2	
Multiplier	400
Total On kWh	31,027
Total Off kWh	22,518
Total kWh	53,545

Distribution Demands	
Annual Demand kW	199.80

Measured Demands	
On-Peak kW	199.80
Off-Peak2 kW	189.40
Constant	400

Supply Capacity	
Generation kW	84.97
Transmission kW	85.33

Charges	PoD ID: PE000010408144345191	Rate - LPLS
Delivery		
Service charge		\$322.12
Distribution charges		
Annual Demand	199.80 kW @ \$3.317417417	662.82
kWh - On-peak	31027 kWh @ \$0.001049086	32.55
kWh - Off-peak	22518 kWh @ \$0.001048939	23.62
Societal Benefits	53545 kWh @ \$0.007674853	410.95
Sub-Total Delivery		\$1,452.06
Total electric charges		\$1,452.06

*You are currently purchasing your electric supply from another supplier. If you had been purchasing your electric supply from PSE&G, you would have been billed \$3,633.82 for this supply. This is your Price to Compare, which varies each month depending upon your usage pattern.

Meter Products and Services

Account number for this location 42 455 184 05

Meter	Description	Amount
E 626051179	Elec web (internet access)	\$2.00
E 626051179	Elec web (internet access)	2.00
E 626051179	Elec web (internet access)	2.00
Total		\$6.00

DIRECT ENERGY BUSINESS, LLC

Account number for this location 42 455 184 05

Through the CHOICE Program, you have chosen to purchase electricity from DIRECT ENERGY BUSINESS, LLC. If you have any questions, please contact them directly at 888-925-9115.

Adjustments	0.00
Current charges	4,486.55
Total DIRECT ENERGY BUSINESS, LLC Charges	\$4,486.55

Fixed Price - 53,545.14 Kwh Total @ \$0.08379/Kwh

141 PARK ST HIGH SCH
 MONTCLAIR TWP NJ

Account number for this location 42 456 005 00

Your next meter reading is
 scheduled for January 11

Meter reading scheduling
 1 800 436-PSEG(7734)

Account Summary for this location

PSE&G balance from last bill	\$11,052.74
Current Charges	5,472.03
Total Amount Due	\$16,524.77

PSE&G Electric

Account number for this location 42 456 005 00

Usage	Meter 9213519	Charges	PoD ID: PE000008948130338751	Rate - LPLS
Delivery				
Reading Oct 10		Service charge		\$371.68
On-Peak actual	6676	Distribution charges		
Off-Peak1		Annual Demand	199.40 kW @ \$3.827783350	763.26
Off-Peak2		kWh - On-peak	31550 kWh @ \$0.001049128	33.10
Reading Sep 12		kWh - Off-peak	15314 kWh @ \$0.001048714	16.06
On-Peak actual	6442	Societal Benefits	46864 kWh @ \$0.007706555	361.16
Off-Peak1		Sub-Total Delivery		\$1,545.26
Off-Peak2		Total electric charges		\$1,545.26
Multiplier	200	<i>*You are currently purchasing your electric supply from another supplier. If you had been purchasing your electric supply from PSE&G, you would have been billed \$3,607.32 for this supply. This is your Price to Compare, which varies each month depending upon your usage pattern.</i>		
Total On kWh	31,550			
Total Off kWh	15,314			
Total kWh	46,864			
Distribution Demands				
Annual Demand kW	199.40			

PSE&G Electric (continued)

Account number for this location 42 456 005 00

Measured Demands

On-Peak kW	199.40
Off-Peak2 kW	153.90
Constant	200

Supply Capacity

Generation kW	92.16
Transmission kW	54.75

DIRECT ENERGY BUSINESS, LLC

Account number for this location 42 456 005 00

Through the CHOICE Program, you have chosen to purchase electricity from DIRECT ENERGY BUSINESS, LLC. If you have any questions, please contact them directly at 888-925-9115.

Adjustments	0.00
Current charges	3,926.77
Total DIRECT ENERGY BUSINESS, LLC Charges	\$3,926.77

Fixed Price - 46,864.44 Kwh Total @ \$0.08379/Kwh

CHAMPLAIN TER O/B-FIELD
 MONTCLAIR TWP NJ

Account number for this location 73 378 370 03

Your next meter reading is
 scheduled for January 09

Meter reading scheduling
 1 800 436-PSEG(7734)

Account Summary for this location

PSE&G balance from last bill	\$11.45
Current Charges	5.86
Total Amount Due	\$17.31

PSE&G Electric

Account number for this location 73 378 370 03

Usage	Meter 626051179
Actual reading Oct 6	1045
Actual reading Sep 7	1028
Total kWh	17
Supply Capacity	
Generation kW	0.06
Transmission kW	0.03

Charges	PoD ID: PE000008184629762503	Rate - GLP
Delivery		
Service charge		\$4.23
Distribution charges		
kWh charges	17 kWh @ \$0.004705882	0.08
Societal Benefits	17 kWh @ \$0.007647059	0.13
Sub-Total Delivery		\$4.44
Total electric charges		\$4.44

**You are currently purchasing your electric supply from another supplier. If you had been purchasing your electric supply from PSE&G, you would have been billed \$1.69 for this supply. This is your Price to Compare, which varies each month depending upon your usage pattern.*

DIRECT ENERGY BUSINESS, LLC

Account number for this location 73 378 370 03

Through the CHOICE Program, you have chosen to purchase electricity from DIRECT ENERGY BUSINESS, LLC. If you have any questions, please contact them directly at 888-925-9115.

Adjustments	0.00
Current charges	1.42
Total DIRECT ENERGY BUSINESS, LLC Charges	\$1.42

Fixed Price - 17 Kwh Total @ \$0.08379/Kwh

32 CEDAR AVE NISHUANE
 MONTCLAIR TWP NJ

Account number for this location 73 378 371 00

Your next meter reading is
 scheduled for January 17

Meter reading scheduling
 1 800 436-PSEG(7734)

Account Summary for this location

PSE&G balance from last bill	\$4,040.32
Current Charges	2,295.59
Total Amount Due	\$6,335.91

PSE&G Electric

Account number for this location 73 378 371 00

Usage	Meter 59581092
Actual reading Oct 13	8036
Actual reading Sep 14	7397
Difference	639
Meter multiplier	30
Total kWh	19170
Distribution Demands	
Annual Demand kW	96.00
Measured Demands	
Demand kW	96.00
Constant	30
Supply Capacity	
Generation kW	77.76
Transmission kW	68.97

Charges	PoD ID: PE000009434847145191	Rate - GLP
Delivery		
Service charge		\$4.23
Distribution charges		
Annual Demand	96.00 kW @ \$4.576354167	439.33
kWh charges	19170 kWh @ \$0.004827856	92.55
Societal Benefits	19170 kWh @ \$0.007643192	146.52
Sub-Total Delivery		\$682.63
Total electric charges		\$682.63

**You are currently purchasing your electric supply from another supplier. If you had been purchasing your electric supply from PSE&G, you would have been billed \$2,004.60 for this supply. This is your Price to Compare, which varies each month depending upon your usage pattern.*

DIRECT ENERGY BUSINESS, LLC

Account number for this location 73 378 371 00

Through the CHOICE Program, you have chosen to purchase electricity from DIRECT ENERGY BUSINESS, LLC. If you have any questions, please contact them directly at 888-925-9115.

Adjustments	0.00
Current charges	1,612.96
Total DIRECT ENERGY BUSINESS, LLC Charges	\$1,612.96

Fixed Price - 19,170 Kwh Total @ \$0.08379/Kwh
 Trans Adj - 19,170 Kwh Total @ \$0.00035/Kwh

**20 EDMONT RD EDMONT
 MONTCLAIR TWP NJ**

Account number for this location 73 378 372 08

Your next meter reading is
 scheduled for January 17

 Meter reading scheduling
 1 800 436-PSEG(7734)

Account Summary for this location

PSE&G balance from last bill	\$2,938.00
Current Charges	1,261.73
Total Amount Due	\$4,199.73

PSE&G Gas

Account number for this location 73 378 372 08

Usage	Meter 2209380
Actual reading Oct 13	58429
Actual reading Sep 14	58251
Difference	178
Conversion to CCF	x 1.0120
CCF total	180.136
Conversion to therms	x 1.03300
Total therms	186.080

Charges	PoD ID: PG000011140101445191	Rate - LVG
Delivery		
Service charge		\$107.00
Distribution charge	186.080 therms @ \$0.0472915	8.80
Societal Benefits	186.080 therms @ \$0.04621670	8.60
Total Delivery		\$124.40
Total gas charges		\$124.40

A history of PSE&G's monthly Basic Gas Supply Service (BGSS) prices are located on our website at www.pseg.com.

Gas Deliveries	
Bill period deliveries	291.631
Imbalance*	105.551 -

** The Imbalance of 105.551- will be applied to your Gas Deliveries in the month of December. The amount and month applied may differ if you are switching third party suppliers or your account requires an adjustment.*

*See text

PSE&G Electric

Account number for this location 73 378 372 08

Usage	Meter 1205063
Actual reading Oct 13	8478
Actual reading Sep 14	8160
Difference	318
Meter multiplier	30

Charges	PoD ID: PE000011140102245191	Rate - GLP
Delivery		
Service charge		\$4.23
Distribution charges		
Annual Demand	46.20 kW @ \$4.576406926	211.43
kWh charges	9540 kWh @ \$0.004828092	46.06

PSE&G Electric (continued)		Account number for this location 73 378 372 08	
Total kWh	9540	Societal Benefits	9540 kWh @ \$0.007642558 72.91
Distribution Demands		Sub-Total Delivery	\$334.63
Annual Demand kW	46.20	Total electric charges	\$334.63
Measured Demands		<i>*You are currently purchasing your electric supply from another supplier. If you had been purchasing your electric supply from PSE&G, you would have been billed \$991.30 for this supply. This is your Price to Compare, which varies each month depending upon your usage pattern.</i>	
Demand kW	46.20		
Constant	30		
Supply Capacity			
Generation kW	38.24		
Transmission kW	35.93		

DIRECT ENERGY BUSINESS, LLC	Account number for this location 73 378 372 08
------------------------------------	--

Through the CHOICE Program, you have chosen to purchase electricity from DIRECT ENERGY BUSINESS, LLC. If you have any questions, please contact them directly at 888-925-9115.

Adjustments	0.00
Current charges	802.70
Total DIRECT ENERGY BUSINESS, LLC Charges	\$802.70

Trans Adj - 9,540 Kwh Total @ \$0.00035/Kwh
 Fixed Price - 9,540 Kwh Total @ \$0.08379/Kwh

22 VALLEY RD BD OF ED MONTCLAIR TWP NJ	Account number for this location 73 378 373 05
---	--

Your next meter reading is scheduled for January 05

Meter reading scheduling
 1 800 436-PSEG(7734)

Account Summary for this location	
PSE&G balance from last bill	\$5,560.49
Current Charges	2,576.34
Total Amount Due	\$8,136.83

PSE&G Gas

Account number for this location 73 378 373 05

Usage	Meter 4223501
Actual reading Oct 4	292
Actual reading Sep 5	243
Difference	49
Conversion to CCF	x 1.0120
CCF total	49.588
Conversion to therms	x 1.03200
Total therms	51.175

Gas Deliveries	
Bill period deliveries	17.175
Imbalance*	34.000 +

*See text

Charges		PoD ID: PG000009908906245191	Rate - GSG
Delivery			
Service charge			\$12.44
Distribution charge	51.175 therms @ \$0.2698583		13.81
Societal Benefits	51.175 therms @ \$0.04748410		2.43
Total Delivery			\$28.68
Total gas charges			\$28.68

A history of PSE&G's monthly Basic Gas Supply Service (BGSS) prices are located on our website at www.pseg.com.

* The Imbalance of 34,000+ will be applied to your Gas Deliveries in the month of December. The amount and month applied may differ if you are switching third party suppliers or your account requires an adjustment.

Usage	Meter 3637119
Estimated reading Oct 5	365770
Estimated reading Sep 5	363689
Difference	2081
Conversion to CCF	x 1.0120
CCF total	2105.972
Conversion to therms	x 1.03200
Total therms	2173.363

Charges		PoD ID: PG000011965185945191	Rate - LVG
Delivery			
Service charge			\$107.00
Distribution charge			
First	1000.000 therms @ \$0.0472700		47.27
Next	1173.363 therms @ \$0.0427319		50.14
Societal Benefits	2173.363 therms @ \$0.04734600		102.90
Total Delivery			\$307.31
Supply*			
BGSS Commodity	2173.363 therms @ \$0.53209243		1,156.43
Total Supply			\$1,156.43
Total gas charges			\$1,463.74

A history of PSE&G's monthly Basic Gas Supply Service (BGSS) prices are located on our website at www.pseg.com.

PSE&G Electric

Account number for this location 73 378 373 05

Usage	Meter 678000415
Actual reading Oct 4	94430
Actual reading Sep 5	94138
Difference	292
Meter multiplier	30
Total kWh	8760
Distribution Demands	
Annual Demand kW	50.70
Measured Demands	
Demand kW	50.70

Charges		PoD ID: PE000009908907045191	Rate - GLP
Delivery			
Service charge			\$4.23
Distribution charges			
Annual Demand	50.70 kW @ \$4.576331361		232.02
kWh charges	8760 kWh @ \$0.004827626		42.29
Societal Benefits	8760 kWh @ \$0.007797945		68.31
Sub-Total Delivery			\$346.85
Total electric charges			\$346.85

*You are currently purchasing your electric supply from another supplier. If you had been purchasing your electric supply from PSE&G, you would have been billed \$1,045.73 for this

PSE&G Electric (continued)

Account number for this location 73 378 373 05

Constant	30	<i>supply. This is your Price to Compare, which varies each month depending upon your usage pattern.</i>
Supply Capacity		
Generation kW	43.44	
Transmission kW	41.90	

DIRECT ENERGY BUSINESS, LLC

Account number for this location 73 378 373 05

Through the CHOICE Program, you have chosen to purchase electricity from DIRECT ENERGY BUSINESS, LLC. If you have any questions, please contact them directly at 888-925-9115.

Adjustments	0.00
Current charges	737.07
Total DIRECT ENERGY BUSINESS, LLC Charges	\$737.07

Fixed Price - 8,760 Kwh Total @ \$0.08379/Kwh
 Trans Adj - 8,760 Kwh Total @ \$0.00035/Kwh

299 N FULLERTON AVE
 WATCHUNG
 MONTCLAIR TWP NJ

Account number for this location 73 378 374 02

Your next meter reading is
 scheduled for January 17

Meter reading scheduling
 1 800 436-PSEG(7734)

Account Summary for this location

PSE&G balance from last bill	\$4,685.81
Current Charges	1,864.59
Total Amount Due	\$6,550.40

PSE&G Gas

Account number for this location 73 378 374 02

Usage	Meter 3010325	Charges	PoD ID: PG000008219967045191	Rate - LVG
Actual reading Oct 13	32128	Delivery		
Actual reading Sep 14	32109	Service charge		\$107.00
Difference	19	Distribution charge	19.863 therms @ \$0.0473242	0.94
Conversion to CCF	x 1.0120	Societal Benefits	19.863 therms @ \$0.04581380	0.91
CCF total	19.228	Total Delivery		\$108.85
Conversion to therms	x 1.03300	Total gas charges		\$108.85
Total therms	19.863			

A history of PSE&G's monthly Basic Gas Supply Service (BGSS) prices are located on our website at www.pseg.com.

Gas Deliveries	
Bill period deliveries	579.346
Imbalance*	559.483 -

** The Imbalance of 559.483- will be applied to your Gas Deliveries in the month of December. The amount and month applied may differ if you are switching third party suppliers or your account requires an adjustment.*

*See text

PSE&G Electric

Account number for this location 73 378 374 02

Usage	Meter 52895559	Charges	PoD ID: PE000008219968845191	Rate - GLP
Actual reading Oct 13	8346	Delivery		
Actual reading Sep 14	7862	Service charge		\$4.23
Difference	484	Distribution charges		
Meter multiplier	30	Annual Demand	76.20 kW @ \$4.576377953	348.72
Total kWh	14520	kWh charges	14520 kWh @ \$0.004827824	70.10
		Societal Benefits	14520 kWh @ \$0.007643251	110.98
Distribution Demands		Sub-Total Delivery		\$534.03
Annual Demand kW	76.20	Total electric charges		\$534.03
Measured Demands		<i>*You are currently purchasing your electric supply from another supplier. If you had been purchasing your electric supply from PSE&G, you would have been billed \$1,705.42 for this supply. This is your Price to Compare, which varies each month depending upon your usage pattern.</i>		
Demand kW	76.20			
Constant	30			
Supply Capacity				
Generation kW	72.56			
Transmission kW	60.76			

DIRECT ENERGY BUSINESS, LLC

Account number for this location 73 378 374 02

Through the CHOICE Program, you have chosen to purchase electricity from DIRECT ENERGY BUSINESS, LLC. If you have any questions, please contact them directly at 888-925-9115.

Adjustments	0.00
Current charges	1,221.71
Total DIRECT ENERGY BUSINESS, LLC Charges	\$1,221.71

Fixed Price - 14,520 Kwh Total @ \$0.08379/Kwh
 Trans Adj - 14,520 Kwh Total @ \$0.00035/Kwh

**173 BELLEVUE AVE GAS ACCT
 MONTCLAIR TWP NJ**

Account number for this location 73 378 375 18

Your next meter reading is scheduled for January 17

Meter reading scheduling
 1 800 436-PSEG(7734)

Account Summary for this location

PSE&G balance from last bill	\$48.84
Current Charges	78.19
Total Amount Due	\$127.03

PSE&G Gas

Account number for this location 73 378 375 18

Usage	Meter 2414297	Charges	PoD ID: PG000008219969680717	Rate - GSG (HTG)
Actual reading Oct 13	71243	Delivery		
Actual reading Sep 14	71044	Service charge		\$12.44
Difference	199	Distribution charge	208.034 therms @ \$0.2698597	56.14
Conversion to CCF	x 1.0120	Societal Benefits	208.034 therms @ \$0.04619440	9.61
CCF total	201.388	Total Delivery		\$78.19
Conversion to therms	x 1.03300	Total gas charges		\$78.19
Total therms	208.034	<i>A history of PSE&G's monthly Basic Gas Supply Service (BGSS) prices are located on our website at www.pseg.com.</i>		
Gas Deliveries		<i>* The Imbalance of 51.044- will be applied to your Gas Deliveries in the month of December. The amount and month applied may differ if you are switching third party suppliers or your account requires an adjustment.</i>		
Bill period deliveries	259.078			
Imbalance*	51.044 -			

*See text

28 ESSEX AVE
 MONTCLAIR TWP NJ

Account number for this location 73 378 376 07

Your next meter reading is
 scheduled for January 17

Meter reading scheduling
 1 800 436-PSEG(7734)

Account Summary for this location

PSE&G balance from last bill	\$5,772.62
Current Charges	1,139.62
Total Amount Due	\$6,912.24

PSE&G Gas

Account number for this location 73 378 376 07

Usage	Meter 3165741	Charges	PoD ID: PG000007977730678939	Rate - LVG
Actual reading Oct 13	27534	Delivery		
Actual reading Sep 14	27499	Service charge		\$107.00
Difference	35	Distribution charge	36.589 therms @ \$0.0472820	1.73
Conversion to CCF	x 1.0120	Societal Benefits	36.589 therms @ \$0.04618870	1.69
CCF total	35.420	Total Delivery		\$110.42
Conversion to therms	x 1.03300	Total gas charges		\$110.42
Total therms	36.589	<i>A history of PSE&G's monthly Basic Gas Supply Service (BGSS) prices are located on our website at www.pseg.com.</i>		
Gas Deliveries		<i>* The Imbalance of 348.930- will be applied to your Gas Deliveries in the month of December. The amount and month applied may differ if you are switching third party suppliers or your account requires an adjustment.</i>		
Bill period deliveries	385.519			
Imbalance*	348.930 -			

*See text

PSE&G Electric

Account number for this location 73 378 376 07

Usage	Meter 9195583
Estimated reading Oct 13	12085
Estimated reading Sep 14	12036
Difference	49
Meter multiplier	120
Total kWh	5880
Distribution Demands	
Annual Demand kW	57.60
Measured Demands	
Demand kW	57.60
Constant	120
Supply Capacity	
Generation kW	50.96
Transmission kW	49.32

Charges	PoD ID: PE000007977731478939	Rate - GLP
Delivery		
Service charge		\$4.23
Distribution charges		
Annual Demand	57.60 kW @ \$4.576388889	263.60
kWh charges	5880 kWh @ \$0.004828231	28.39
Societal Benefits	5880 kWh @ \$0.007644558	44.95
Sub-Total Delivery		\$341.17
Total electric charges		\$341.17

**You are currently purchasing your electric supply from another supplier. If you had been purchasing your electric supply from PSE&G, you would have been billed \$985.87 for this supply. This is your Price to Compare, which varies each month depending upon your usage pattern.*

PSE&G Electric

Account number for this location 73 378 376 07

Usage	Meter 638000167
Actual reading Oct 13	32880
Estimated reading Sep 14	32812
Difference	68
Meter multiplier	20
Total kWh	1360
Distribution Demands	
Annual Demand kW	12.60
Measured Demands	
Demand kW	12.60
Constant	20
Supply Capacity	
Generation kW	7.34
Transmission kW	7.51

Charges	PoD ID: PE000007977732278939	Rate - GLP
Delivery		
Service charge		\$4.23
Distribution charges		
Annual Demand	12.60 kW @ \$4.576190476	57.66
kWh charges	1360 kWh @ \$0.004830882	6.57
Societal Benefits	1360 kWh @ \$0.007639706	10.39
Sub-Total Delivery		\$78.85
Total electric charges		\$78.85

**You are currently purchasing your electric supply from another supplier. If you had been purchasing your electric supply from PSE&G, you would have been billed \$167.12 for this supply. This is your Price to Compare, which varies each month depending upon your usage pattern.*

DIRECT ENERGY BUSINESS, LLC

Account number for this location 73 378 376 07

Through the CHOICE Program, you have chosen to purchase electricity from DIRECT ENERGY BUSINESS, LLC. If you have any questions, please contact them directly at 888-925-9115.

Adjustments	0.00
Current charges	609.18
Total DIRECT ENERGY BUSINESS, LLC Charges	\$609.18

Fixed Price - 1,360 Kwh Total @ \$0.08379/Kwh
 Trans Adj - 1,360 Kwh Total @ \$0.00035/Kwh
 Fixed Price - 5,880 Kwh Total @ \$0.08379/Kwh
 Trans Adj - 5,880 Kwh Total @ \$0.00035/Kwh

603 GROVE ST N W ELEM
 MONTCLAIR TWP NJ

Account number for this location 73 378 377 04

Your next meter reading is
 scheduled for January 17

Meter reading scheduling
 1 800 436-PSEG(7734)

Account Summary for this location

PSE&G balance from last bill	\$5,788.25
Current Charges	3,058.25
Total Amount Due	\$8,846.50

PSE&G Gas

Account number for this location 73 378 377 04

Usage	Meter 2209360	Charges	PoD ID: PG000008704508445191	Rate - LVG
Actual reading Oct 13	76386	Delivery		
Actual reading Sep 14	76246	Service charge		\$107.00
Difference	140	Distribution charge	149.523 therms @ \$0.0472837	7.07
Conversion to CCF	x 1.0339	Societal Benefits	149.523 therms @ \$0.04621360	6.91
CCF total	144.746	Total Delivery		\$120.98
Conversion to therms	x 1.03300	Total gas charges		\$120.98
Total therms	149.523	<i>A history of PSE&G's monthly Basic Gas Supply Service (BGSS) prices are located on our website at www.pseg.com.</i>		

Gas Deliveries	
Bill period deliveries	225.867
Imbalance*	76.344

** The Imbalance of 76.344- will be applied to your Gas Deliveries in the month of December. The amount and month applied may differ if you are switching third party suppliers or your account requires an adjustment.*

*See text

PSE&G Electric

Account number for this location 73 378 377 04

Usage	Meter 678001516	Charges	PoD ID: PE000008704509245191	Rate - GLP
Actual reading Oct 13	35743	Delivery		
Actual reading Sep 14	35414	Service charge		\$4.23
Difference	329	Distribution charges		

PSE&G Electric (continued)

Account number for this location 73 378 377 04

Meter multiplier	75	Annual Demand	120.00 kW @ \$4.576416667	549.17
Total kWh	24675	kWh charges	24675 kWh @ \$0.004827964	119.13
Distribution Demands		Societal Benefits	24675 kWh @ \$0.007642553	188.58
Annual Demand kW	120.00	Sub-Total Delivery		\$861.11
Measured Demands		Total electric charges		\$861.11
Demand kW	120.00	<i>*You are currently purchasing your electric supply from another supplier. If you had been purchasing your electric supply from PSE&G, you would have been billed \$2,648.44 for this supply. This is your Price to Compare, which varies each month depending upon your usage pattern.</i>		
Constant	75			
Supply Capacity				
Generation kW	105.08			
Transmission kW	99.69			

DIRECT ENERGY BUSINESS, LLC

Account number for this location 73 378 377 04

Through the CHOICE Program, you have chosen to purchase electricity from DIRECT ENERGY BUSINESS, LLC. If you have any questions, please contact them directly at 888-925-9115.

Adjustments	0.00
Current charges	2,076.16
Total DIRECT ENERGY BUSINESS, LLC Charges	\$2,076.16

Fixed Price - 24,675 Kwh Total @ \$0.08379/Kwh
 Trans Adj - 24,675 Kwh Total @ \$0.00035/Kwh

**MIDLAND AVE
 MONTCLAIR TWP NJ**

Account number for this location 73 378 378 01

Your next meter reading is scheduled for January 17
 Meter reading scheduling 1 800 436-PSEG(7734)

Account Summary for this location

PSE&G balance from last bill	\$8.32
Current Charges	4.23
Total Amount Due	\$12.55

PSE&G Electric

Account number for this location 73 378 378 01

Usage	Meter 134019815	Charges	PoD ID: PE000011384048278916	Rate - GLP
Actual reading Oct 13	34258	Delivery		
Actual reading Sep 14	34258	Service charge		\$4.23
Total kWh	0	Sub-Total Delivery		\$4.23
Supply Capacity		Total electric charges		\$4.23
Generation kW	0.00	<i>*You are currently purchasing your electric supply from another supplier. If you had been purchasing your electric supply from PSE&G, you would have been billed \$0.01 for this</i>		
Transmission kW	0.00			

PSE&G Electric (continued)

Account number for this location 73 378 378 01

supply. This is your Price to Compare, which varies each month depending upon your usage pattern.

DIRECT ENERGY BUSINESS, LLC

Account number for this location 73 378 378 01

Through the CHOICE Program, you have chosen to purchase electricity from DIRECT ENERGY BUSINESS, LLC. If you have any questions, please contact them directly at 888-925-9115.

Adjustments	0.00
Current charges	0.00
Total DIRECT ENERGY BUSINESS, LLC Charges	\$0.00

Fixed Price - 0 Kwh Total @ \$0.08379/Kwh

**CHURCH ST & NW COR
 MONTCLAIR TWP NJ**

Account number for this location 73 378 379 09

Your next meter reading is scheduled for February 01

Meter reading scheduling
 1 800 436-PSEG(7734)

Account Summary for this location

PSE&G balance from last bill	\$25.66
Current Charges	10.31
Total Amount Due	\$35.97

Unmetered Electric Service

Account number for this location 73 378 379 09

		Charges	Rate - GLP
PoD ID:	PE000011818803678780		
Service from	10/3/2017	Delivery	
to	10/31/2017	Fixed services	\$1.96
Usage	30.0	Distribution charges	
Distribution Demands		Annual Demand	0.30 kW @ \$4.566666700 1.37
Annual Demand kW	0.30	kWh charges	30 kWh @ \$0.004828000 0.14
Supply Capacity		Societal Benefits	30 kWh @ \$0.007333300 0.22
Generation kW	0.29	Facilities charge	4.10
Transmission kW	0.26	Sub-Total Delivery	\$7.79
		Unmetered charges	\$7.79

**The total supply amount (\$5.29) is your Price to Compare for this month should you consider another electric supplier for these services. Your Price to Compare varies each month depending upon your usage pattern.*

DIRECT ENERGY BUSINESS, LLC

Account number for this location 73 378 379 09

Through the CHOICE Program, you have chosen to purchase electricity from DIRECT ENERGY BUSINESS, LLC. If you have any questions, please contact them directly at 888-925-9115.

Adjustments	0.00
Current charges	2.52
Total DIRECT ENERGY BUSINESS, LLC Charges	\$2.52

Fixed Price - 30 Kwh Total @ \$0.08379/Kwh
 Trans Adj - 30 Kwh Total @ \$0.00035/Kwh

**141 PARK ST GAS ACCT
 MONTCLAIR TWP NJ**

Account number for this location 73 378 380 18

Your next meter reading is
 scheduled for January 17

Meter reading scheduling
 1 800 436-PSEG(7734)

Account Summary for this location

PSE&G balance from last bill	\$276.98
Current Charges	149.94
Total Amount Due	\$426.92

PSE&G Gas

Account number for this location 73 378 380 18

Usage	Meter 3637994
Actual reading Oct 13	290840
Actual reading Sep 14	290410
Difference	430
Conversion to CCF	x 1.0339
CCF total	444.577
Conversion to therms	x 1.03300
Total therms	459.248

Charges	PoD ID: PG000010163338638751	Rate - LVG
Delivery		
Service charge		\$107.00
Distribution charge	459 248 therms @ \$0 0472729	21.71
Societal Benefits	459 248 therms @ \$0 04622770	21.23
Total Delivery		\$149.94
Total gas charges		\$149.94

A history of PSE&G's monthly Basic Gas Supply Service (BGSS) prices are located on our website at www.pseg.com.

Gas Deliveries	
Bill period deliveries	1027 212
Imbalance*	567.964

** The Imbalance of 567.964- will be applied to your Gas Deliveries in the month of December. The amount and month applied may differ if you are switching third party suppliers or your account requires an adjustment.*

*See text

41 CHESTNUT ST ARENA
 MONTCLAIR TWP NJ

Account number for this location 73 378 381 07

Your next meter reading is
 scheduled for January 17

Meter reading scheduling
 1 800 436-PSEG(7734)

Account Summary for this location

PSE&G balance from last bill	\$63.72
Current Charges	26.33
Total Amount Due	\$90.05

PSE&G Gas

Account number for this location 73 378 381 07

Usage	Meter 2359827
Actual reading Oct 13	955
Actual reading Sep 14	934
Difference	21
Conversion to CCF	x 1.0120
CCF total	21.252
Conversion to therms	x 1.03300
Total therms	21.953

Gas Deliveries	
Bill period deliveries	15.607
Imbalance*	6.346 +

*See text

Charges	PoD ID: PG000010164338577005	Rate - GSG (HTG)
Delivery		
Service charge		\$12.44
Distribution charge	21.953 therms @ \$0.2696670	5.92
Societal Benefits	21.953 therms @ \$0.04600740	1.01
Total Delivery		\$19.37
Total gas charges		\$19.37

A history of PSE&G's monthly Basic Gas Supply Service (BGSS) prices are located on our website at www.pseg.com.

* The Imbalance of 6.346+ will be applied to your Gas Deliveries in the month of December. The amount and month applied may differ if you are switching third party suppliers or your account requires an adjustment.

PSE&G Electric

Account number for this location 73 378 381 07

Usage	Meter 626051212
Actual reading Oct 13	46173
Actual reading Sep 14	46159
Total kWh	14
Distribution Demands	
Annual Demand kW	0.30
Supply Capacity	
Generation kW	0.77
Transmission kW	0.60

Charges	PoD ID: PE000010164339377005	Rate - GLP
Delivery		
Service charge		\$4.23
Distribution charges		
Annual Demand	0.30 kW @ \$4.600000000	1.38
kWh charges	14 kWh @ \$0.005000000	0.07
Societal Benefits	14 kWh @ \$0.007857143	0.11
Sub-Total Delivery		\$5.79

Total electric charges \$5.79

*You are currently purchasing your electric supply from another supplier. If you had been purchasing your electric supply from PSE&G, you would have been billed \$11.21 for this supply. This is your Price to Compare, which varies each month depending upon your usage pattern.

DIRECT ENERGY BUSINESS, LLC

Account number for this location 73 378 381 07

Through the CHOICE Program, you have chosen to purchase electricity from DIRECT ENERGY BUSINESS, LLC. If you have any questions, please contact them directly at 888-925-9115.

Adjustments	0.00
Current charges	1.17
Total DIRECT ENERGY BUSINESS, LLC Charges	\$1.17

Fixed Price - 14 Kwh Total @ \$0.08379/Kwh
 Trans Adj - 14 Kwh Total @ \$0.00035/Kwh

54 ORANGE RD
 MONTCLAIR TWP NJ

Account number for this location 73 378 382 04

Your next meter reading is
 scheduled for January 17

Meter reading scheduling
 1 800 436-PSEG(7734)

Account Summary for this location

PSE&G balance from last bill	\$5,514.06
Current Charges	547.36
Total Amount Due	\$6,061.42

PSE&G Electric

Account number for this location 73 378 382 04

Usage	Meter 278003480
Actual reading Oct 13	7350
Actual reading Sep 14	6790
Difference	560
Meter multiplier	30
Total kWh	16800
Distribution Demands	
Annual Demand kW	72.90
Measured Demands	
Demand kW	72.90
Constant	30
Supply Capacity	
Generation kW	72.51
Transmission kW	62.08

Charges	PoD ID: PE000009434846378760	Rate - GLP
Delivery		
Service charge		\$4.23
Distribution charges		
Annual Demand	72.90 kW @ \$4.576406036	333.62
kWh charges	16800 kWh @ \$0.004827976	81.11
Societal Benefits	16800 kWh @ \$0.007642857	128.40
Sub-Total Delivery		\$547.36

Total electric charges **\$547.36**

**You are currently purchasing your electric supply from another supplier. If you had been purchasing your electric supply from PSE&G, you would have been billed \$1,816.38 for this supply. This is your Price to Compare, which varies each month depending upon your usage pattern.*

32 CEDAR AVE
 MONTCLAIR TWP NJ

Account number for this location 73 378 383 01

Your next meter reading is
 scheduled for January 17

Meter reading scheduling
 1 800 436-PSEG(7734)

Account Summary for this location

PSE&G balance from last bill	\$222.53
Current Charges	112.99
Total Amount Due	\$335.52

PSE&G Gas

Account number for this location 73 378 383 01

Usage	Meter 3929120
Actual reading Oct 13	463
Estimated reading Sep 14	403
Difference	60
Conversion to CCF	x 1.0339
CCF total	62.034
Conversion to therms	x 1.03300
Total therms	64.081

Gas Deliveries	
Bill period deliveries	584.448
Imbalance*	520.367 -

Charges	PoD ID: PG000009676840338751	Rate - LVG
Delivery		
Service charge		\$107.00
Distribution charge	64.081 therms @ \$0.0472839	3.03
Societal Benefits	64.081 therms @ \$0.04619150	2.96
Total Delivery		\$112.99

Total gas charges \$112.99

A history of PSE&G's monthly Basic Gas Supply Service (BGSS) prices are located on our website at www.pseg.com.

** The Imbalance of 520.367- will be applied to your Gas Deliveries in the month of December. The amount and month applied may differ if you are switching third party suppliers or your account requires an adjustment.*

*See text

176 N FULLERTON AVE RENA MID
 MONTCLAIR TWP NJ

Account number for this location 73 378 384 09

Your next meter reading is
 scheduled for January 17

Meter reading scheduling
 1 800 436-PSEG(7734)

Account Summary for this location

PSE&G balance from last bill	\$3,937.66
Current Charges	2,259.00
Total Amount Due	\$6,196.66

PSE&G Gas

Account number for this location 73 378 384 09

Usage	Meter 2415310
Actual reading Oct 13	77085
Actual reading Sep 14	77006
Difference	79
Conversion to CCF	x 1.0339
CCF total	81.678
Conversion to therms	x 1.03300
Total therms	84.373

Gas Deliveries	
Bill period deliveries	232.268
Imbalance*	147.895 -

*See text

Charges		PoD ID: PG000011627847445191	Rate - LVG
Delivery			
Service charge			\$107.00
Distribution charge	84.373 therms @ \$0.0472900		3.99
Societal Benefits	84.373 therms @ \$0.04610480		3.89
Total Delivery			\$114.88
Total gas charges			\$114.88

A history of PSE&G's monthly Basic Gas Supply Service (BGSS) prices are located on our website at www.pseg.com.

* The Imbalance of 147.895- will be applied to your Gas Deliveries in the month of December. The amount and month applied may differ if you are switching third party suppliers or your account requires an adjustment.

PSE&G Electric

Account number for this location 73 378 384 09

Usage	Meter 278002714
Actual reading Oct 13	3044
Actual reading Sep 14	2648
Difference	396
Meter multiplier	45
Total kWh	17820
Distribution Demands	
Annual Demand kW	91.40
Measured Demands	
Demand kW	91.40
Constant	45
Supply Capacity	
Generation kW	74.50
Transmission kW	65.39

Charges		PoD ID: PE000011627848245191	Rate - GLP
Delivery			
Service charge			\$4.23
Distribution charges			
Annual Demand	91.40 kW @ \$4.576477024		418.29
kWh charges	17820 kWh @ \$0.004827722		86.03
Societal Benefits	17820 kWh @ \$0.007642536		136.19
Sub-Total Delivery			\$644.74
Total electric charges			\$644.74

*You are currently purchasing your electric supply from another supplier. If you had been purchasing your electric supply from PSE&G, you would have been billed \$1,893.78 for this supply. This is your Price to Compare, which varies each month depending upon your usage pattern.

DIRECT ENERGY BUSINESS, LLC

Account number for this location 73 378 384 09

Through the CHOICE Program, you have chosen to purchase electricity from DIRECT ENERGY BUSINESS, LLC. If you have any questions, please contact them directly at 888-925-9115.

Adjustments	0.00
Current charges	1,499.38
Total DIRECT ENERGY BUSINESS, LLC Charges	\$1,499.38

Trans Adj - 17,820 Kwh Total @ \$0.00035/Kwh
 Fixed Price - 17,820 Kwh Total @ \$0.08379/Kwh

**VARIOUS LOCATIONS LTG
 MONTCLAIR TWP NJ**

Account number for this location 73 378 385 06

Your next meter reading is
 scheduled for February 01

Meter reading scheduling
 1 800 436-PSEG(7734)

Account Summary for this location

PSE&G balance from last bill	\$3,198.12
Current Charges	1,701.31
Total Amount Due	\$4,899.43

Unmetered Electric Service

Account number for this location 73 378 385 06

PoD ID: PE000011818852345191
 PE000011939060745191

Service from 10/3/2017
 to 10/31/2017

Usage 9575.0

Charges	Rate - BPL
Delivery	
Usage/Fixture charge	\$986.58
Distribution charges	
kWh charges	9575 kWh @ \$0.032306005 309.33
Sub-Total Delivery	\$1,295.91
Unmetered charges	\$1,295.91

**The total supply amount (\$335.27) is your Price to Compare for this month should you consider another electric supplier for these services. Your Price to Compare varies each month depending upon your usage pattern.*

TriEagle Energy, LP

Account number for this location 73 378 385 06

Through the CHOICE Program, you have chosen to purchase electricity from TriEagle Energy, LP. If you have any questions, please contact them directly at 877-933-2453.

Adjustments	0.00
Current charges	405.40
Total TriEagle Energy, LP Charges	\$405.40

176 N FULLERTON AVE
MONTCLAIR TWP NJ

Account number for this location 73 378 386 03

Your next meter reading is
scheduled for February 01

Meter reading scheduling
1 800 436-PSEG(7734)

Account Summary for this location

PSE&G balance from last bill	\$63.12
Current Charges	33.41
Total Amount Due	\$96.53

Unmetered Electric Service

Account number for this location 73 378 386 03

PoD ID: PE000011818747580574

Charges

Rate - BPL

Service from 10/3/2017
to 10/31/2017

Delivery

Usage 167.0

Usage/Fixture charge \$20.94

Distribution charges

kWh charges 167 kWh @ \$0.032306000 5.40

Sub-Total Delivery \$26.34

Unmetered charges

\$26.34

**The total supply amount (\$5.85) is your Price to Compare for this month should you consider another electric supplier for these services. Your Price to Compare varies each month depending upon your usage pattern.*

TriEagle Energy, LP

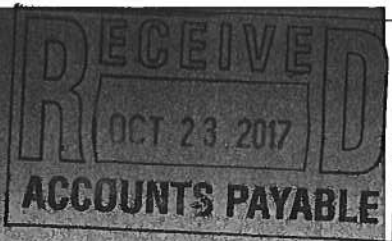
Account number for this location 73 378 386 03

Through the CHOICE Program, you have chosen to purchase electricity from TriEagle Energy, LP. If you have any questions, please contact them directly at 877-933-2453.

Adjustments	0.00
Current charges	7.07
Total TriEagle Energy, LP Charges	\$7.07



Monthly Statement
OCTOBER 2017
 Account number 42 079 504 00



For service at

51 WASHINGTON ST SCHOOL
 MONTCLAIR TWP NJ
 07042

1 855-BIZ-PSEG (249-7734)
Emergencies 24 hours/7days
 Business customer service
 7 AM - 5.30 PM Mon - Fri
 Closed on weekend and Holidays

Visit our website
 www.pseg.com

Inquiries by mail
 PSE&G
 PO Box 14444
 New Brunswick NJ 08906-4444

Important Dates

Your payment for current charges
 is due November 02, 2017.

Your meter(s) are scheduled to be
 read on or about November 10.

To make a payment from a credit
 card Log In to **My Account** at
 pseg.com or call 1 888-575-6273

000081 000000260



MONTCLAIR TWP OF
 BOARD OF EDUCATION
 22 VALLEY RD STE A
 MONTCLAIR NJ 07042-2775

E = 5,574.80

Account Summary

*Sept 2017 \$4,903.81
 Aug 2017 CK 21684*

PSE&G balance from last bill	\$9,526.93
Payment received Sep 22 - Thank You!	-4,623.12
Current PSE&G - Electric charges for 1 meter	1,681.02
Meter Product Charges	2.00
DIRECT ENERGY BUSINESS, LLC Electric Charges	3,891.78
Total Amount Due	\$10,478.61

**** SHUT-OFF NOTICE ** 1-800-357-2262 (Mon-Fri, 7:30 AM - 8:00 PM)**
Your bill is now past due. Payment of \$4,895.81 must be received by 11/2/2017 or service may be shut off. A security deposit may be required if late payments continue. A statement of customer rights and fees is shown on the reverse side.

Si en el futuro usted desea recibir la notificación de desconexión de servicio en español, por favor llame al 1-800-357-2262.

In October, Customer Service Professionals throughout the country celebrate National Customer Service Week. In honor of this week, PSE&G would like to thank you for your business, and recognize our Customer Service professionals who work hard to serve you every day.

Statement of Customer Rights

PSE&G IS SUBJECT TO THE JURISDICTION OF THE N.J. BOARD OF PUBLIC UTILITIES (BPU), 44 SOUTH CLINTON AVENUE, TRENTON, NJ 08625, 1-609-341-9188 OR TOLL FREE 1-800-624-0241. **HOWEVER, YOU SHOULD CONTACT PSE&G ON ANY BILLING OR SERVICE QUESTIONS BEFORE CALLING THE BPU. THE PSE&G PHONE NUMBER IS SHOWN ON THE FRONT OF THE BILL.**

IF YOU ARE UNABLE TO MAKE A PAYMENT, YOU MAY DISCUSS REASONABLE PAYMENT ARRANGEMENTS BY VISITING ONE OF OUR CUSTOMER SERVICE CENTERS OR BY CALLING OUR CREDIT AND COLLECTION CENTER AT 1-800-357-2262 BETWEEN THE HOURS OF 7:30 AM AND 8:00 PM (MON - FRI). IF YOU WISH TO CONTEST YOUR BILL, YOU MAY VISIT ONE OF OUR CUSTOMER SERVICE CENTERS OR CALL OUR CUSTOMER INQUIRY CENTER AT 1-800-436-7734, MON - FRI, 7:00 AM - 8:00 PM AND SAT, 7:00 AM - 5:00 PM.

YOU MAY HAVE COUNSEL OR THIRD PARTY REPRESENTATION WHEN APPEARING BEFORE PSE&G TO CONTEST A BONA FIDE DISPUTED CHARGE.

IF WITHIN FIVE DAYS A REQUEST IS MADE TO THE BPU FOR AN INVESTIGATION OF THE DISPUTED CHARGE, SERVICE WILL NOT BE DISCONTINUED BECAUSE OF NONPAYMENT OF BILLS PROVIDED ALL UNDISPUTED CHARGES ARE PAID.

YOU MAY CONTACT THE BPU TO REQUEST ASSISTANCE IN THE RESOLUTION OF A BONA FIDE DISPUTED CHARGE. YOU MAY ALSO REQUEST A FORMAL HEARING WITH THE BPU CONCERNING SUCH A DISPUTED CHARGE.

**** Additional Shut Off Information ** 1-800-357-2262 (Mon-Fri, 7:30 AM - 8:00 PM)**

A reconnection fee of \$45.00 will be charged for each service that is shut off. Service may not be restored on the same day payment is made. A fee of \$30.00 will be charged if a visit is made to collect past due bills. A late payment fee may be charged for past due bills. You can avoid a security deposit and poor credit rating by paying bills by their due date.



PSE&G Electric

Usage In	Meter 9213653
Reading Oct 12	
Actual On-Peak	17510
Actual Off-Peak1	
Actual Off-Peak2	
Reading Sep 14	
Actual On-Peak	16897
Actual Off-Peak1	
Actual Off-Peak2	
Multiplier	80
On-peak kWh In	32312
Off-peak kWh In	16723
Total kWh In	49035

Usage Out	Meter 9213653
Reading Oct 12	
Actual On-Peak	1787
Actual Off-Peak1	
Actual Off-Peak2	
Reading Sep 14	
Actual On-Peak	1755
Actual Off-Peak1	
Actual Off-Peak2	
Multiplier	80
On-peak kWh Out	27
Off-peak kWh Out	2561
Total kWh Out	2588
Net Usage	46447
On-peak	32285
Off-peak	14162

Charges	PoD ID: PE000011897052480545	Rate - LPLS
Delivery		
Service charge		\$371.68
Distribution charges		
Annual Demand	236.40 kW @ \$3.827791878	904.89
kWh - On-peak	32285 kWh @ \$0.001049094	33.87
kWh - Off-peak	14162 kWh @ \$0.001049287	14.86
Societal Benefits	46447 kWh @ \$0.007658622	355.72
Sub-Total Delivery		\$1,681.02

Total electric charges \$1,681.02

**You are currently purchasing your electric supply from another supplier. If you had been purchasing your electric supply from PSE&G, you would have been billed \$2,440.54 for this supply. This is your Price to Compare, which varies each month depending upon your usage pattern.*

Distribution Demands

Annual Demand kW 236.4

Measured Demands

On-Peak kW	236.4
Off-Peak1 kW	0.0
Off-Peak2 kW	219.4
Constant	80

Supply Capacity

Generation kW	0.00
Transmission kW	0.00

Bi-Directional Meter Data kWh

MM/YY	Time of Use	In-Use	Out-Use	Difference	Cumulative Difference	Billed kWh
JUN 17	On	26,479	274	26,205	0	26,205
	Off	16,351	3,950	12,401	0	12,401



FORMAL_UOF_000002_FTK_11000000

PSE&G Electric (continued)

Bi-Directional Meter Data kWh (continued)						
MM/YY	Time of Use	In-Use	Out-Use	Difference	Cumulative Difference	Billed kWh
JUL 17	On	16,679	3,763	12,916	0	12,916
	Off	14,210	3,522	10,688	0	10,688
AUG 17	On	10,432	2,230	8,202	0	8,202
	Off	14,411	3,049	11,362	0	11,362
SEP 17	On	14,876	3,501	11,375	0	11,375
	Off	13,273	4,438	8,835	0	8,835
OCT 17	On	32,312	27	32,285	0	32,285
	Off	16,723	2,561	14,162	0	14,162
Total	On	100,778	9,795	90,983		90,983
	Off	74,968	17,520	57,448		57,448

*Anniversary Month

Meter Products and Services

Meter	Description	Amount
E 9213653	Elec web (internet access)	\$2.00
Total		\$2.00

DIRECT ENERGY BUSINESS, LLC

Through the CHOICE Program, you have chosen to purchase electricity from DIRECT ENERGY BUSINESS, LLC. If you have any questions, please contact them directly at 888-925-9115.

Adjustments	0.00
Current charges	3,891.78
Total DIRECT ENERGY BUSINESS, LLC Charges	\$3,891.78

Fixed Price - 46,446.876 Kwh Total @ \$0.08379/Kwh

Electronic Check Conversion

When you pay by check, you authorize PSE&G to use your check to make a one-time electronic fund transfer from your account. If you do not wish to participate, call 1-800-436-PSEG.

Electric & Gas Rate Information

For news about PSE&G's rate filing and upcoming public hearings visit www.pseg.com/pseandgfilings

Customer Service Centers

Open Monday through Friday, during the hours noted.

Bayonne, 608 Broadway	8am to 4:00pm
Burlington, 501 High Street	8am to 4:00pm
Camden, 1 Port Center	8am to 4:00pm
Elizabeth, 550 N. Broad Street	8am to 4:00pm
Hackensack, 214 Hudson Street	8am to 4:00pm
Hoboken, 615 Washington Street	8am to 4:00pm
Jersey City, 35 Journal Square (Corner of Bergen Ave. & Newkirk St.)	8am to 4:00pm
Newark, 80 Park Plaza	8am to 4:00pm
New Brunswick, 317 George St.	8am to 4:00pm
West Orange, 59 Main St.	8am to 4:00pm
Passaic, 651 Main Ave	8am to 4:00pm
Paterson, 301 Main St (30 Clark St)	8am to 4:00pm
Perth Amboy, 286 State St.	8am to 4:00pm
Plainfield, 120 West Seventh Street	8am to 4:00pm
Trenton, 28 West State Street	8am to 4:00pm
Union City, 4808 Bergenline Avenue	8am to 4:00pm

Bill Form Definitions

Service Charge: A fixed monthly charge related to metering, billing and account maintenance.

Distribution Charges (Gas): Charges related to delivering gas through pipes from supply sources to the customer. These charges include a therm component, and in November through March on certain rate schedules, also include a demand component.

Bill Form Definitions (continued)

Balancing Charge (Gas): This charge reflects storage related costs associated with winter gas use. This charge is only applicable in the billing months of November through March.

Demand (Gas): The highest average daily use of gas over the most recent billing months of November to March.

Supply (Gas): Charges for customers who do not choose a competitive gas supplier are called Basic Gas Supply Service (BGSS). The charges include the cost of the natural gas as well as the cost of interstate delivery of the gas to New Jersey.

Distribution Charges (Electric): Charges related to delivering electricity through wires from supply sources to the customer. These charges include both kilowatthour (kWh) and demand (kW) components.

Measured Demand (Electric): The maximum use of electricity at any time during a month or monthly time period (on or off-peak).

Annual Demand (Electric):

(For Rate HTS): The highest Measured Demand over the most recent 12 months.

(For Rates MD, ED, LPLS, LPLP): The highest Measured Demand in any time period in the current month.

Summer Demand (Electric): The Measured Demand (excluding off-peak) in each billing month of June through September.

Societal Benefits: This charge recovers the cost of government mandated programs designed to achieve public policy goals, such as energy conservation.

Securitization Transition: This charge recovers costs and associated taxes for transition bonds and for BGS transition bonds collected by PSE&G as servicer on behalf of PSE&G Transition Funding LLC and PSE&G Transition Funding II LLC, respectively.

Supply Capacity (Electric): A customer's share of the generation and transmission facilities, measured in kilowatts (kW), which must be procured to serve the system annual peak usage. The customer's share is calculated from the customer's peak usage in the prior year's summer. For new customers without prior summer usage the share is calculated from connected load.

Supply (Electric): Charges for customers who do not choose a competitive electric supplier are called Basic Generation Service (BGS). The charges include the energy as well as the generation and transmission facilities necessary to produce and transmit the energy.

TDD number for the hearing impaired 1 800 225-0072

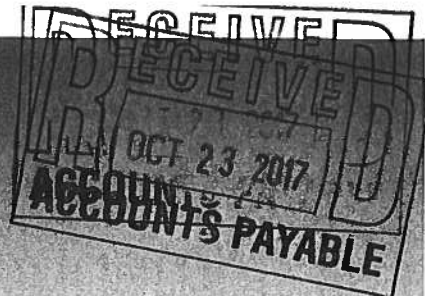


PBMMAILUBF_000003_MK_11000000





Monthly Statement
OCTOBER 2017
 Account number 42 003 456 09



For service at

173 BELLEVUE AVE HEBRON MID
 MONTCLAIR TWP NJ
 07043-1818

1 855-BIZ-PSEG (249-7734)
Emergencies 24 hours/7days
 Business customer service
 7 AM - 5.30 PM Mon - Fri
 Closed on weekend and Holidays

Visit our website
www.pseg.com

Inquiries by mail
 PSE&G
 PO Box 14444
 New Brunswick NJ 08906-4444

Important Dates

Your payment for current charges is due November 01, 2017.

Your meter(s) are scheduled to be read on or about November 13.

To make a payment from a credit card Log In to **My Account** at pseg.com or call 1 888-575-6273

000051 000000312



MONTCLAIR BD OF ED
 MONTCLAIR TWP OF
 22 VALLEY RD
 MONTCLAIR NJ 07042-2709

Account Summary

PSE&G balance from last bill	\$14,126.76
Current PSE&G - Gas charges for 1 meter	107.00 <i>VG</i>
Total Amount Due	\$14,233.76

*** * SHUT-OFF NOTICE * *** 1-800-357-2262 (Mon-Fri, 7:30 AM - 8:00 PM)
Your bill is now past due. Payment of \$8,395.14 must be received by 11/1/2017 or service may be shut off. A security deposit may be required if late payments continue. A statement of customer rights and fees is shown on the reverse side.

Si en el futuro usted desea recibir la notificación de desconexión de servicio en español, por favor llame al 1-800-357-2262.

In October, Customer Service Professionals throughout the country celebrate National Customer Service Week. In honor of this week, PSE&G would like to thank you for your business, and recognize our Customer Service professionals who work hard to serve you every day.

At PSE&G, we are committed to supporting your business needs. That's why we created a dedicated, toll-free phone number to address your energy questions and concerns. **PSE&G's Business Solutions Center** is available Monday-Friday, 7:00 a.m. - 5:30 p.m. at **1-855-249-7734 (1-855-BIZ-PSEG).**

Statement of Customer Rights

PSE&G IS SUBJECT TO THE JURISDICTION OF THE N.J. BOARD OF PUBLIC UTILITIES (BPU), 44 SOUTH CLINTON AVENUE, TRENTON, NJ 08625, 1-609-341-9188 OR TOLL FREE 1-800-624-0241. **HOWEVER, YOU SHOULD CONTACT PSE&G ON ANY BILLING OR SERVICE QUESTIONS BEFORE CALLING THE BPU. THE PSE&G PHONE NUMBER IS SHOWN ON THE FRONT OF THE BILL.**

IF YOU ARE UNABLE TO MAKE A PAYMENT, YOU MAY DISCUSS REASONABLE PAYMENT ARRANGEMENTS BY VISITING ONE OF OUR CUSTOMER SERVICE CENTERS OR BY CALLING OUR CREDIT AND COLLECTION CENTER AT 1-800-357-2262 BETWEEN THE HOURS OF 7:30 AM AND 8:00 PM (MON - FRI). IF YOU WISH TO CONTEST YOUR BILL, YOU MAY VISIT ONE OF OUR CUSTOMER SERVICE CENTERS OR CALL OUR CUSTOMER INQUIRY CENTER AT 1-800-436-7734, MON - FRI, 7:00 AM - 8:00 PM AND SAT, 7:00 AM - 5:00 PM.

YOU MAY HAVE COUNSEL OR THIRD PARTY REPRESENTATION WHEN APPEARING BEFORE PSE&G TO CONTEST A BONA FIDE DISPUTED CHARGE.

IF WITHIN FIVE DAYS A REQUEST IS MADE TO THE BPU FOR AN INVESTIGATION OF THE DISPUTED CHARGE, SERVICE WILL NOT BE DISCONTINUED BECAUSE OF NONPAYMENT OF BILLS PROVIDED ALL UNDISPUTED CHARGES ARE PAID.

YOU MAY CONTACT THE BPU TO REQUEST ASSISTANCE IN THE RESOLUTION OF A BONA FIDE DISPUTED CHARGE. YOU MAY ALSO REQUEST A FORMAL HEARING WITH THE BPU CONCERNING SUCH A DISPUTED CHARGE.

**** Additional Shut Off Information ** 1-800-357-2262 (Mon-Fri, 7:30 AM - 8:00 PM)**

A reconnection fee of \$45.00 will be charged for each service that is shut off. Service may not be restored on the same day payment is made. A fee of \$30.00 will be charged if a visit is made to collect past due bills. A late payment fee may be charged for past due bills. You can avoid a security deposit and poor credit rating by paying bills by their due date.



October 2017
Account number 42 003 456 09
Visit our website: www.pseg.com

Page 3 of 4

PSE&G Gas

Usage	Meter 3637662
Actual reading Oct 13	285369
Actual reading Sep 14	285369
Conversion to CCF	x 1.0339
Total therms	0.000

Gas Deliveries	
Bill period deliveries	821.988
Imbalance*	821.988 -

*See text

Charges	PoD ID: PG000011626833545191	Rate - LVG
Delivery		
Service charge		\$107.00
Total Delivery		\$107.00
Total gas charges		\$107.00

A history of PSE&G's monthly Basic Gas Supply Service (BGSS) prices are located on our website at www.pseg.com.

* The Imbalance of 821.988- will be applied to your Gas Deliveries in the month of December. The amount and month applied may differ if you are switching third party suppliers or your account requires an adjustment.



Electronic Check Conversion

When you pay by check, you authorize PSE&G to use your check to make a one-time electronic fund transfer from your account. If you do not wish to participate, call 1-800-436-PSEG.

Electric & Gas Rate Information

For news about PSE&G's rate filing and upcoming public hearings visit www.pseg.com/pseandgfilings

Customer Service Centers

Open Monday through Friday, during the hours noted

Bayonne, 608 Broadway	8am to 4:00pm
Burlington, 501 High Street	8am to 4:00pm
Camden, 1 Port Center	8am to 4:00pm
Elizabeth, 550 N. Broad Street	8am to 4:00pm
Hackensack, 214 Hudson Street	8am to 4:00pm
Hoboken, 615 Washington Street	8am to 4:00pm
Jersey City, 35 Journal Square (Corner of Bergen Ave. & Newkirk St.)	8am to 4:00pm
Newark, 80 Park Plaza	8am to 4:00pm
New Brunswick, 317 George St.	8am to 4:00pm
West Orange, 59 Main St.	8am to 4:00pm
Passaic, 651 Main Ave	8am to 4:00pm
Paterson, 301 Main St (30 Clark St)	8am to 4:00pm
Perth Amboy, 286 State St.	8am to 4:00pm
Plainfield, 120 West Seventh Street	8am to 4:00pm
Trenton, 28 West State Street	8am to 4:00pm
Union City, 4808 Bergentline Avenue	8am to 4:00pm

Bill Form Definitions

Service Charge: A fixed monthly charge related to metering, billing and account maintenance.

Distribution Charges (Gas): Charges related to delivering gas through pipes from supply sources to the customer. These charges include a therm component, and in November through March on certain rate schedules, also include a demand component.

Bill Form Definitions (continued)

Balancing Charge (Gas): This charge reflects storage related costs associated with winter gas use. This charge is only applicable in the billing months of November through March.

Demand (Gas): The highest average daily use of gas over the most recent billing months of November to March.

Supply (Gas): Charges for customers who do not choose a competitive gas supplier are called Basic Gas Supply Service (BGSS). The charges include the cost of the natural gas as well as the cost of interstate delivery of the gas to New Jersey.

Distribution Charges (Electric): Charges related to delivering electricity through wires from supply sources to the customer. These charges include both kilowatt-hour (kWh) and demand (kW) components.

Measured Demand (Electric): The maximum use of electricity at any time during a month or monthly time period (on or off-peak).

Annual Demand (Electric):

(For Rate HIS) The highest Measured Demand over the most recent 12 months.

(For Rates MD, ED, I PLS, LPLP) The highest Measured Demand in any time period in the current month.

Summer Demand (Electric): The Measured Demand (excluding off-peak) in each billing month of June through September.

Societal Benefits: This charge recovers the cost of government mandated programs designed to achieve public policy goals, such as energy conservation.

Securitization Transition: This charge recovers costs and associated taxes for transition bonds and for BGS transition bonds collected by PSE&G as servicer on behalf of PSE&G Transition Funding LLC and PSE&G Transition Funding II LLC, respectively.

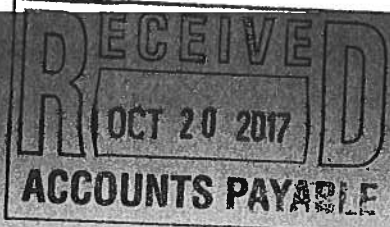
Supply Capacity (Electric): A customer's share of the generation and transmission facilities, measured in kilowatts (kW), which must be procured to serve the system annual peak usage. The customer's share is calculated from the customer's peak usage in the prior year's summer. For new customers without prior summer usage the share is calculated from connected load.

Supply (Electric): Charges for customers who do not choose a competitive electric supplier are called Basic Generation Service (BGS). The charges include the energy as well as the generation and transmission facilities necessary to produce and transmit the energy.

TDD number for the hearing impaired 1 800 225 0072



Monthly Statement
OCTOBER 2017
 Account number 42 003 456 09



For service at

173 BELLEVUE AVE HEBRON MID
 MONTCLAIR TWP NJ
 07043-1818

1 855-BIZ-PSEG (249-7734)

Emergencies 24 hours/7 days

Business customer service
 7 AM - 5.30 PM Mon - Fri
 Closed on weekend and Holidays

Visit our website
www.pseg.com

Inquiries by mail
 PSE&G
 PO Box 14444
 New Brunswick NJ 08906-4444

Important Dates

Your payment for current charges is due October 31, 2017.

Your meter(s) are scheduled to be read on or about November 10.

To make a payment from a credit card Log In to **My Account** at pseg.com or call 1 888-575-6273

000104 000000283

 MONTCLAIR BD OF ED
 MONTCLAIR TWP OF
 22 VALLEY RD
 MONTCLAIR NJ 07042-2709

*Sept 2017 \$6,395.09
 CL 2/16/86*

Account Summary

PSE&G balance from last bill	\$12,632.19
Payment received Sep 22 - Thank You!	-4,237.05 ✓
Current PSE&G - Electric charges for 1 meter	5,731.62 e
Total Amount Due	\$14,126.76

**** SHUT-OFF NOTICE ** 1-800-357-2262 (Mon-Fri, 7:30 AM - 8:00 PM)**
Your bill is now past due. Payment of \$8,395.14 must be received by 10/31/2017 or service may be shut off. A security deposit may be required if late payments continue. A statement of customer rights and fees is shown on the reverse side.

Si en el futuro usted desea recibir la notificación de desconexión de servicio en español, por favor llame al 1-800-357-2262.

In October, Customer Service Professionals throughout the country celebrate National Customer Service Week. In honor of this week, PSE&G would like to thank you for your business, and recognize our Customer Service professionals who work hard to serve you every day.

At PSE&G, we are committed to supporting your business needs. That's why we created a dedicated, toll-free phone number to address your energy questions and concerns. **PSE&G's Business Solutions Center** is available Monday-Friday, 7:00 a.m. - 5:30 p.m. at **1-855-249-7734 (1-855-BIZ-PSEG).**

Statement of Customer Rights

PSE&G IS SUBJECT TO THE JURISDICTION OF THE N.J. BOARD OF PUBLIC UTILITIES (BPU), 44 SOUTH CLINTON AVENUE, TRENTON, NJ 08625, 1-609-341-9188 OR TOLL FREE 1-800-624-0241. **HOWEVER, YOU SHOULD CONTACT PSE&G ON ANY BILLING OR SERVICE QUESTIONS BEFORE CALLING THE BPU. THE PSE&G PHONE NUMBER IS SHOWN ON THE FRONT OF THE BILL.**

IF YOU ARE UNABLE TO MAKE A PAYMENT, YOU MAY DISCUSS REASONABLE PAYMENT ARRANGEMENTS BY VISITING ONE OF OUR CUSTOMER SERVICE CENTERS OR BY CALLING OUR CREDIT AND COLLECTION CENTER AT 1-800-357-2262 BETWEEN THE HOURS OF 7:30 AM AND 8:00 PM (MON - FRI). IF YOU WISH TO CONTEST YOUR BILL, YOU MAY VISIT ONE OF OUR CUSTOMER SERVICE CENTERS OR CALL OUR CUSTOMER INQUIRY CENTER AT 1-800-436-7734, MON - FRI, 7:00 AM - 8:00 PM AND SAT, 7:00 AM - 5:00 PM.

YOU MAY HAVE COUNSEL OR THIRD PARTY REPRESENTATION WHEN APPEARING BEFORE PSE&G TO CONTEST A BONA FIDE DISPUTED CHARGE.

IF WITHIN FIVE DAYS A REQUEST IS MADE TO THE BPU FOR AN INVESTIGATION OF THE DISPUTED CHARGE, SERVICE WILL NOT BE DISCONTINUED BECAUSE OF NONPAYMENT OF BILLS PROVIDED ALL UNDISPUTED CHARGES ARE PAID.

YOU MAY CONTACT THE BPU TO REQUEST ASSISTANCE IN THE RESOLUTION OF A BONA FIDE DISPUTED CHARGE. YOU MAY ALSO REQUEST A FORMAL HEARING WITH THE BPU CONCERNING SUCH A DISPUTED CHARGE.

**** Additional Shut Off Information ** 1-800-357-2262 (Mon-Fri, 7:30 AM - 8:00 PM)**

A reconnection fee of \$45.00 will be charged for each service that is shut off. Service may not be restored on the same day payment is made. A fee of \$30.00 will be charged if a visit is made to collect past due bills. A late payment fee may be charged for past due bills. You can avoid a security deposit and poor credit rating by paying bills by their due date.



PSE&G Electric

Usage	Meter 9205674
Reading Oct 12	
On-Peak actual	4131
Off-Peak1	
Off-Peak2	
Reading Sep 14	
On-Peak actual	3986
Off-Peak1	
Off-Peak2	
Multiplier	400
Total On kWh	39,400
Total Off kWh	18,760
Total kWh	58,160
Distribution Demands	
Annual Demand kW	248.80
Measured Demands	
On-Peak kW	248.80
Off-Peak2 kW	214.90
Constant	400
Supply Capacity	
Generation kW	64.69
Transmission kW	53.43

Charges	PoD ID: PE000011626834345191	Rate - LPLS
Delivery		
Service charge		\$371.68
Distribution charges		
Annual Demand	248.80 kW @ \$3.827813505	952.36
kWh - On-peak	39400 kWh @ \$0.001048985	41.33
kWh - Off-peak	18760 kWh @ \$0.001049041	19.68
Societal Benefits	58160 kWh @ \$0.007672799	446.25
Sub-Total Delivery		\$1,831.30
Supply*		
BGS Capacity		
Generation	64.69 kW @ \$6.204887247	401.45
Transmission	53.43 kW @ \$8.564557483	457.63
BGS Energy		
On-peak	23996 kWh @ \$0.064319053	1,543.40
Next	15404 kWh @ \$0.055016230	847.47
Off-peak	11476 kWh @ \$0.036858662	422.99
Next	7284 kWh @ \$0.031216365	227.38
Sub-Total Supply		\$3,900.32
Total electric charges		\$5,731.62

*The total supply amount (\$3,900.32) is your Price to Compare for this month should you consider another electric supplier for these services. Your Price to Compare varies each month depending upon your usage pattern.



Electronic Check Conversion

When you pay by check, you authorize PSE&G to use your check to make a one-time electronic fund transfer from your account. If you do not wish to participate, call 1-800-436-PSEG.

Electric & Gas Rate Information

For news about PSE&G's rate filing and upcoming public hearings visit www.pseg.com/pseandgfilings

Customer Service Centers

Open Monday through Friday, during the hours noted.

Bayonne, 608 Broadway	8am to 4:00pm
Burlington, 501 High Street	8am to 4:00pm
Camden, 1 Port Center	8am to 4:00pm
Elizabeth, 550 N. Broad Street	8am to 4:00pm
Hackensack, 214 Hudson Street	8am to 4:00pm
Hoboken, 615 Washington Street	8am to 4:00pm
Jersey City, 35 Journal Square (Corner of Bergen Ave. & Newkirk St.)	8am to 4:00pm
Newark, 80 Park Plaza	8am to 4:00pm
New Brunswick, 317 George St.	8am to 4:00pm
West Orange, 59 Main St.	8am to 4:00pm
Passaic, 651 Main Ave	8am to 4:00pm
Paterson, 301 Main St (30 Clark St)	8am to 4:00pm
Perth Amboy, 313 Madison Ave.	8am to 4:00pm
Plainfield, 120 West Seventh Street	8am to 4:00pm
Trenton, 28 West State Street	8am to 4:00pm
Union City, 4808 Bergenline Avenue	8am to 4:00pm

Bill Form Definitions

Service Charge: A fixed monthly charge related to metering, billing and account maintenance.

Distribution Charges (Gas): Charges related to delivering gas through pipes from supply sources to the customer. These charges include a therm component, and in November through March on certain rate schedules, also include a demand component.

Bill Form Definitions (continued)

Balancing Charge (Gas): This charge reflects storage related costs associated with winter gas use. This charge is only applicable in the billing months of November through March.

Demand (Gas): The highest average daily use of gas over the most recent billing months of November to March.

Supply (Gas): Charges for customers who do not choose a competitive gas supplier are called Basic Gas Supply Service (BGSS). The charges include the cost of the natural gas as well as the cost of interstate delivery of the gas to New Jersey.

Distribution Charges (Electric): Charges related to delivering electricity through wires from supply sources to the customer. These charges include both kilowatthour (kWh) and demand (kW) components.

Measured Demand (Electric): The maximum use of electricity at any time during a month or monthly time period (on or off-peak).

Annual Demand (Electric):

(For Rate HTS): The highest Measured Demand over the most recent 12 months.

(For Rates MD, ED, LPLS, LPLP): The highest Measured Demand in any time period in the current month.

Summer Demand (Electric): The Measured Demand (excluding off-peak) in each billing month of June through September.

Societal Benefits: This charge recovers the cost of government mandated programs designed to achieve public policy goals, such as energy conservation.

Securitization Transition: This charge recovers costs and associated taxes for transition bonds and for BGS transition bonds collected by PSE&G as servicer on behalf of PSE&G Transition Funding LLC and PSE&G Transition Funding II LLC, respectively.

Supply Capacity (Electric): A customer's share of the generation and transmission facilities, measured in kilowatts (kW), which must be procured to serve the system annual peak usage. The customer's share is calculated from the customer's peak usage in the prior year's summer. For new customers without prior summer usage the share is calculated from connected load.

Supply (Electric): Charges for customers who do not choose a competitive electric supplier are called Basic Generation Service (BGS). The charges include the energy as well as the generation and transmission facilities necessary to produce and transmit the energy.

TDD number for the hearing impaired 1 800 225-0072



Monthly Statement
OCTOBER 2017
 Account number 42 003 519 00

**For service at**

100 CHESTNUT ST HIGH SCH
 MONTCLAIR TWP NJ
 07042-2908

1 855-BIZ-PSEG (249-7734)**Emergencies 24 hours/7days**

Business customer service
 7 AM - 5:30 PM Mon - Fri
 Closed on weekend and Holidays

Visit our website
www.pseg.com

Inquiries by mail
 PSE&G
 PO Box 14444
 New Brunswick NJ 08906-4444

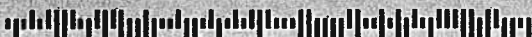
Important Dates

Your payment
 is due November 01, 2017.

Your meter(s) are scheduled to be
 read on or about November 13.

To make a payment from a credit
 card Log In to **My Account** at
pseg.com or call 1 888-575-6273

000049 000000313



MONTCLAIR BD OF ED
 TWSP OF MONTCLAIR
 22 VALLEY RD
 MONTCLAIR NJ 07042-2709

Account Summary

PSE&G balance from last bill	\$7,892.46
Current PSE&G - Gas charges for 2 meters	204.49
Total Amount Due On Nov 1, 2017	\$8,096.95

In October, Customer Service Professionals throughout the country celebrate National Customer Service Week. In honor of this week, PSE&G would like to thank you for your business, and recognize our Customer Service professionals who work hard to serve you every day.

At PSE&G, we are committed to supporting your business needs. That's why we created a dedicated, toll-free phone number to address your energy questions and concerns. **PSE&G's Business Solutions Center** is available Monday-Friday, 7:00 a.m. - 5:30 p.m. at **1-855-249-7734 (1-855-BIZ-PSEG).**

New Outdoor Lighting options are available. Don't go another year with unreliable or outdated outdoor lighting technology. Rely on PSE&G to meet your lighting needs. For more information, call 1-800-664-4761 (Option 3). Some restrictions apply.

Electronic Check Conversion

When you pay by check, you authorize PSE&G to use your check to make a one-time electronic fund transfer from your account. If you do not wish to participate, call 1-800-436-PSEG.

Electric & Gas Rate Information

For news about PSE&G's rate filing and upcoming public hearings visit www.pseg.com/pseandgfilings

Customer Service Centers

Open Monday through Friday, during the hours noted

Bayonne, 608 Broadway	8am to 4:00pm
Burlington, 501 High Street	8am to 4:00pm
Camden, 1 Port Center	8am to 4:00pm
Elizabeth, 550 N. Broad Street	8am to 4:00pm
Hackensack, 214 Hudson Street	8am to 4:00pm
Hoboken, 615 Washington Street	8am to 4:00pm
Jersey City, 35 Journal Square (Corner of Bergen Ave. & Newkirk St)	8am to 4:00pm
Newark, 80 Park Plaza	8am to 4:00pm
New Brunswick, 317 George St	8am to 4:00pm
West Orange, 59 Main St	8am to 4:00pm
Passaic, 651 Main Ave	8am to 4:00pm
Paterson, 301 Main St (30 Clark St)	8am to 4:00pm
Perth Amboy, 286 State St	8am to 4:00pm
Plainfield, 120 West Seventh Street	8am to 4:00pm
Trenton, 28 West State Street	8am to 4:00pm
Union City, 4808 Bergenline Avenue	8am to 4:00pm

Bill Form Definitions

Service Charge: A fixed monthly charge related to metering, billing and account maintenance.

Distribution Charges (Gas): Charges related to delivering gas through pipes from supply sources to the customer. These charges include a therm component, and in November through March on certain rate schedules, also

Bill Form Definitions (continued)

Balancing Charge (Gas): This charge reflects storage related costs associated with winter gas use. This charge is only applicable in the billing months of November through March.

Demand (Gas): The highest average daily use of gas over the most recent billing months of November to March.

Supply (Gas): Charges for customers who do not choose a competitive gas supplier are called Basic Gas Supply Service (BGSS). The charges include the cost of the natural gas as well as the cost of interstate delivery of the gas to New Jersey.

Distribution Charges (Electric): Charges related to delivering electricity through wires from supply sources to the customer. These charges include both kilowatt-hour (kWh) and demand (kW) components.

Measured Demand (Electric): The maximum use of electricity at any time during a month or monthly time period (on or off peak)

Annual Demand (Electric):

(I or Rate HTS): The highest Measured Demand over the most recent 12 months

(For Rates MD, LD, I PI S, I PI P): The highest Measured Demand in any time period in the current month

Summer Demand (Electric): The Measured Demand (excluding off peak) in each billing month of June through September.

Societal Benefits: This charge recovers the cost of government mandated programs designed to achieve public policy goals, such as energy conservation.

Securitization Transition: This charge recovers costs and associated taxes for transition bonds and for BGS transition bonds collected by PSE&G as servicer on behalf of PSE&G Transition Funding LLC and PSE&G Transition Funding II LLC, respectively.

Supply Capacity (Electric): A customer's share of the generation and transmission facilities, measured in kilowatts (kW), which must be procured to serve the system annual peak usage. The customer's share is calculated from the customer's peak usage in the prior year's summer. For new customers without prior summer usage the share is calculated from connected load.

Supply (Electric): Charges for customers who do not choose a competitive electric supplier are called Basic Generation Service (BGS). The charges include the energy as well as the generation and transmission facilities necessary to produce and transmit the energy.

TDD number for the hearing impaired 1 800 225-0072



PSE&G Gas

Usage	Meter 2579052
Actual reading Oct 13	8609
Actual reading Sep 14	8453
Conversion to CCF	x 1.0682
CCF total	166.639
Conversion to therms	x 1.03300
Total therms	172.138

Gas Deliveries	
Bill period deliveries	217.210
Imbalance*	45.072 -

*See text

Usage	Meter 1784994
Actual reading Oct 13	522874
Actual reading Sep 14	522559
Conversion to CCF	x 1.0070
CCF total	317.205
Conversion to therms	x 1.03300
Total therms	327.673

Gas Deliveries	
Bill period deliveries	1113.525
Imbalance*	785.852 -

*See text

Charges	PoD ID: PG000008461142538751	Rate - GSG
Delivery		
Service charge		\$12.44
Distribution charge	172.138 therms @ \$0.2698416	46.45
Societal Benefits	172.138 therms @ \$0.04624200	7.96
Total Delivery		\$66.85
Total gas charges		\$66.85

A history of PSE&G's monthly Basic Gas Supply Service (BGSS) prices are located on our website at www.pseg.com.

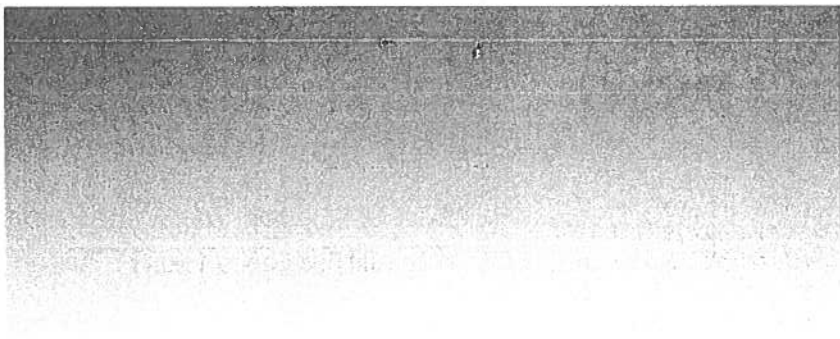
* The Imbalance of 45.072- will be applied to your Gas Deliveries in the month of December. The amount and month applied may differ if you are switching third party suppliers or your account requires an adjustment.

Charges	PoD ID: PG000008461143338751	Rate - LVG
Delivery		
Service charge		\$107.00
Distribution charge	327.673 therms @ \$0.0472727	15.49
Societal Benefits	327.673 therms @ \$0.04623510	15.15
Total Delivery		\$137.64
Total gas charges		\$137.64

A history of PSE&G's monthly Basic Gas Supply Service (BGSS) prices are located on our website at www.pseg.com.

* The Imbalance of 785.852- will be applied to your Gas Deliveries in the month of December. The amount and month applied may differ if you are switching third party suppliers or your account requires an adjustment.







Monthly Statement
OCTOBER 2017
 Account number 42 003 519 00

RECEIVED
 OCT 20 2017
ACCOUNTS PAYABLE

For service at

100 CHESTNUT ST HIGH SCH
 MONTCLAIR TWP NJ
 07042-2908

1 855-BIZ-PSEG (249-7734)

Emergencies 24 hours/7 days

Business customer service
 7 AM - 5.30 PM Mon - Fri
 Closed on weekend and Holidays

Visit our website
 www.pseg.com

Inquiries by mail
 PSE&G
 PO Box 14444
 New Brunswick NJ 08906-4444

Important Dates

Your payment
 is due October 31, 2017.

Your meter(s) are scheduled to be
 read on or about November 08.

To make a payment from a credit
 card Log In to **My Account** at
 pseg.com or call 1 888-575-6273

000108 000000281

 MONTCLAIR BD OF ED
 TWSP OF MONTCLAIR
 22 VALLEY RD
 MONTCLAIR NJ 07042-2709

*Sept 611,658.12
 OK 21686
 10/19/17
 E = 11,246.60*

Account Summary

PSE&G balance from last bill	\$8,795.45
Payment received Sep 22 - Thank You!	-12,149.59 ✓ CA1523
Current PSE&G - Electric charges for 1 meter	2,703.78
Meter Product Charges	2.00
DIRECT ENERGY BUSINESS, LLC Electric Charges	8,540.82
Total Amount Due On Oct 31, 2017	\$7,892.46

In October, Customer Service Professionals throughout the country celebrate National Customer Service Week. In honor of this week, PSE&G would like to thank you for your business, and recognize our Customer Service professionals who work hard to serve you every day.

At PSE&G, we are committed to supporting your business needs. That's why we created a dedicated, toll-free phone number to address your energy questions and concerns. **PSE&G's Business Solutions Center** is available Monday-Friday, 7:00 a.m. - 5:30 p.m. at **1-855-249-7734 (1-855-BIZ-PSEG).**

New Outdoor Lighting options are available. Don't go another year with unreliable or outdated outdoor lighting technology. Rely on PSE&G to meet your lighting needs. For more information, call 1-800-664-4761 (Option 3). Some restrictions apply.

Electronic Check Conversion

When you pay by check, you authorize PSE&G to use your check to make a one-time electronic fund transfer from your account. If you do not wish to participate, call 1-800-436-PSEG.

Electric & Gas Rate Information

For news about PSE&G's rate filing and upcoming public hearings visit www.pseg.com/pseandgfilings

Customer Service Centers

Open Monday through Friday, during the hours noted.

Bayonne, 608 Broadway	8am to 4:00pm
Burlington, 501 High Street	8am to 4:00pm
Camden, 1 Port Center	8am to 4:00pm
Elizabeth, 550 N. Broad Street	8am to 4:00pm
Hackensack, 214 Hudson Street	8am to 4:00pm
Hoboken, 615 Washington Street	8am to 4:00pm
Jersey City, 35 Journal Square (Corner of Bergen Ave. & Newkirk St.)	8am to 4:00pm
Newark, 80 Park Plaza	8am to 4:00pm
New Brunswick, 317 George St.	8am to 4:00pm
West Orange, 59 Main St.	8am to 4:00pm
Passaic, 651 Main Ave	8am to 4:00pm
Paterson, 301 Main St (30 Clark St)	8am to 4:00pm
Perth Amboy, 313 Madison Ave.	8am to 4:00pm
Plainfield, 120 West Seventh Street	8am to 4:00pm
Trenton, 28 West State Street	8am to 4:00pm
Union City, 4808 Bergenline Avenue	8am to 4:00pm

Bill Form Definitions

Service Charge: A fixed monthly charge related to metering, billing and account maintenance.

Distribution Charges (Gas): Charges related to delivering gas through pipes from supply sources to the customer. These charges include a therm component, and in

Bill Form Definitions (continued)

Balancing Charge (Gas): This charge reflects storage related costs associated with winter gas use. This charge is only applicable in the billing months of November through March.

Demand (Gas): The highest average daily use of gas over the most recent billing months of November to March.

Supply (Gas): Charges for customers who do not choose a competitive gas supplier are called Basic Gas Supply Service (BGSS). The charges include the cost of the natural gas as well as the cost of interstate delivery of the gas to New Jersey.

Distribution Charges (Electric): Charges related to delivering electricity through wires from supply sources to the customer. These charges include both kilowatthour (kWh) and demand (kW) components.

Measured Demand (Electric): The maximum use of electricity at any time during a month or monthly time period (on or off peak).

Annual Demand (Electric):

(For Rate HIS): The highest Measured Demand over the most recent 12 months.

(For Rates MD, ED, LPLS, LPLP): The highest Measured Demand in any time period in the current month.

Summer Demand (Electric): The Measured Demand (excluding off-peak) in each billing month of June through September.

Societal Benefits: This charge recovers the cost of government mandated programs designed to achieve public policy goals, such as energy conservation.

Securitization Transition: This charge recovers costs and associated taxes for transition bonds and for BGS transition bonds collected by PSE&G as servicer on behalf of PSE&G Transition Funding LLC and PSE&G Transition Funding II LLC, respectively.

Supply Capacity (Electric): A customer's share of the generation and transmission facilities, measured in kilowatts (kW), which must be procured to serve the system annual peak usage. The customer's share is calculated from the customer's peak usage in the prior year's summer. For new customers without prior summer usage the share is calculated from connected load.

Supply (Electric): Charges for customers who do not choose a competitive electric supplier are called Basic Generation Service (BGS). The charges include the energy as well as the generation and transmission facilities necessary to produce and transmit the energy.

TDD number for the hearing impaired 1 800 225-0072



October 2017
 Account number 42 003 519 00
 Visit our website, www.pseg.com

PSE&G Electric

Usage	Meter 9213601
Reading Oct 10	
On-Peak actual	7771
Off-Peak1	
Off-Peak2	
Reading Sep 12	
On-Peak actual	7516
Off-Peak1	
Off-Peak2	
Multiplier	400
Total On kWh	67,307
Total Off kWh	34,625
Total kWh	101,932
Distribution Demands	
Annual Demand kW	376.20
Measured Demands	
On-Peak kW	376.20
Off-Peak2 kW	276.50
Constant	400
Supply Capacity	
Generation kW	193.76
Transmission kW	138.31

Charges	PoD ID: PE000008461144138751	Rate - LPLS
Delivery		
Service charge		\$371.68
Distribution charges		
Annual Demand	376.20 kW @ \$3.827804359	1,440.02
kWh - On-peak	67307 kWh @ \$0.001049074	70.61
kWh - Off-peak	34625 kWh @ \$0.001048953	36.32
Societal Benefits	101932 kWh @ \$0.007702684	785.15
Sub-Total Delivery		\$2,703.78
Total electric charges		\$2,703.78

**You are currently purchasing your electric supply from another supplier. If you had been purchasing your electric supply from PSE&G, you would have been billed \$7,722.96 for this supply. This is your Price to Compare, which varies each month depending upon your usage pattern.*

Meter Products and Services

Meter	Description	Amount
E 9213601	Elec web (internet access)	\$2.00
Total		\$2.00

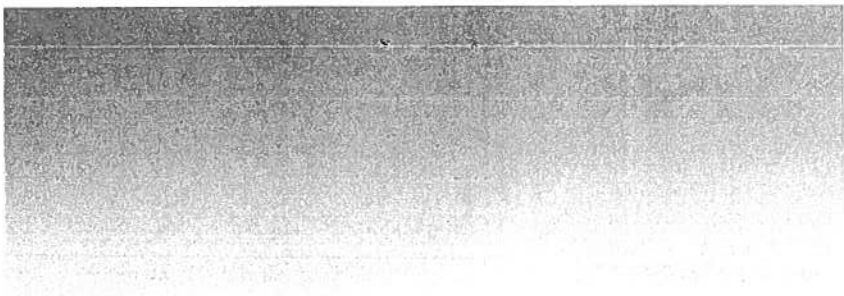
DIRECT ENERGY BUSINESS, LLC

Through the CHOICE Program, you have chosen to purchase electricity from DIRECT ENERGY BUSINESS, LLC. If you have any questions, please contact them directly at 888-925-9115.

Adjustments	0.00
Current charges	8,540.82
Total DIRECT ENERGY BUSINESS, LLC Charges	\$8,540.82

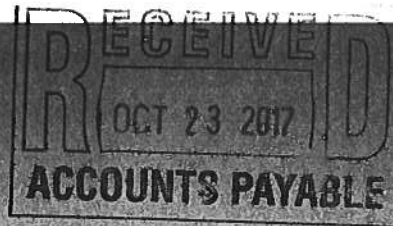
Fixed Price - 101,931.3 Kwh Total @ \$0.08379/Kwh







Monthly Statement
OCTOBER 2017
 Account number 42 007 763 08



For service at

54 ORANGE RD HILLSIDE
 MONTCLAIR TWP NJ
 07042-2110

1 855-BIZ-PSEG (249-7734)
Emergencies 24 hours/7days
 Business customer service
 7 AM - 5.30 PM Mon - Fri
 Closed on weekend and Holidays

Visit our website
www.pseg.com

Inquiries by mail
 PSE&G
 PO Box 14444
 New Brunswick NJ 08906-4444

Important Dates

Your payment for current charges
 is due November 01, 2017.

Your meter(s) are scheduled to be
 read on or about November 13.

To make a payment from a credit
 card Log In to **My Account** at
pseg.com or call 1 888-575-6273

000053 000000311



MONTCLAIR BD OF ED
 MONTCLAIR TWP OF
 22 VALLEY RD
 MONTCLAIR NJ 07042-2709

Account Summary

PSE&G balance from last bill	\$6,289.85
Current PSE&G - Gas charges for 1 meter	93.40 ⁹
Total Amount Due	\$6,383.25

**** SHUT-OFF NOTICE ** 1-800-357-2262 (Mon-Fri, 7:30 AM - 8:00 PM)**
Your bill is now past due. Payment of \$2,558.39 must be received by 11/1/2017 or service may be shut off. A security deposit may be required if late payments continue. A statement of customer rights and fees is shown on the reverse side.

Si en el futuro usted desea recibir la notificación de desconexión de servicio en español, por favor llame al 1-800-357-2262.

In October, Customer Service Professionals throughout the country celebrate National Customer Service Week. In honor of this week, PSE&G would like to thank you for your business, and recognize our Customer Service professionals who work hard to serve you every day.

At PSE&G, we are committed to supporting your business needs. That's why we created a dedicated, toll-free phone number to address your energy questions and concerns. **PSE&G's Business Solutions Center** is available Monday-Friday, 7:00 a.m. - 5:30 p.m. at **1-855-249-7734 (1-855-BIZ-PSEG).**

Statement of Customer Rights

PSE&G IS SUBJECT TO THE JURISDICTION OF THE N.J. BOARD OF PUBLIC UTILITIES (BPU), 44 SOUTH CLINTON AVENUE, TRENTON, NJ 08625, 1-609-341-9188 OR TOLL FREE 1-800-624-0241. **HOWEVER, YOU SHOULD CONTACT PSE&G ON ANY BILLING OR SERVICE QUESTIONS BEFORE CALLING THE BPU. THE PSE&G PHONE NUMBER IS SHOWN ON THE FRONT OF THE BILL.**

IF YOU ARE UNABLE TO MAKE A PAYMENT, YOU MAY DISCUSS REASONABLE PAYMENT ARRANGEMENTS BY VISITING ONE OF OUR CUSTOMER SERVICE CENTERS OR BY CALLING OUR CREDIT AND COLLECTION CENTER AT 1-800-357-2262 BETWEEN THE HOURS OF 7:30 AM AND 8:00 PM (MON - FRI). IF YOU WISH TO CONTEST YOUR BILL, YOU MAY VISIT ONE OF OUR CUSTOMER SERVICE CENTERS OR CALL OUR CUSTOMER INQUIRY CENTER AT 1-800-436-7734. MON - FRI. 7:00 AM - 8:00 PM AND SAT, 7:00 AM - 5:00 PM.

YOU MAY HAVE COUNSEL OR THIRD PARTY REPRESENTATION WHEN APPEARING BEFORE PSE&G TO CONTEST A BONA FIDE DISPUTED CHARGE.

IF WITHIN FIVE DAYS A REQUEST IS MADE TO THE BPU FOR AN INVESTIGATION OF THE DISPUTED CHARGE, SERVICE WILL NOT BE DISCONTINUED BECAUSE OF NONPAYMENT OF BILLS PROVIDED ALL UNDISPUTED CHARGES ARE PAID.

YOU MAY CONTACT THE BPU TO REQUEST ASSISTANCE IN THE RESOLUTION OF A BONA FIDE DISPUTED CHARGE. YOU MAY ALSO REQUEST A FORMAL HEARING WITH THE BPU CONCERNING SUCH A DISPUTED CHARGE.

**** Additional Shut Off Information ** 1-800-357-2262 (Mon-Fri, 7:30 AM - 8:00 PM)**

A reconnection fee of \$45.00 will be charged for each service that is shut off. Service may not be restored on the same day payment is made. A fee of \$30.00 will be charged if a visit is made to collect past due bills. A late payment fee may be charged for past due bills. You can avoid a security deposit and poor credit rating by paying bills by their due date.



October 2017
 Account number 42 007 763 08
 Visit our website: www.pseg.com

PSE&G Gas

Usage	Meter 4225127
Actual reading Oct 13	317
Actual reading Sep 14	72
Conversion to CCF	x 1.0120
CCF total	247.940
Conversion to therms	x 1.03300
Total therms	256.122

Gas Deliveries	
Bill period deliveries	222.217
Imbalance*	33.905 +

*See text

Charges	PoD ID: PG000010894967845191	Rate - GSG
Delivery		
Service charge		\$12.44
Distribution charge	256.122 therms @ \$0.2698323	69.11
Societal Benefits	256.122 therms @ \$0.04626700	11.85
Total Delivery		\$93.40
Total gas charges		\$93.40

A history of PSE&G's monthly Basic Gas Supply Service (BGSS) prices are located on our website at www.pseg.com.

* The Imbalance of 33.905+ will be applied to your Gas Deliveries in the month of December. The amount and month applied may differ if you are switching third party suppliers or your account requires an adjustment.



Electronic Check Conversion

When you pay by check, you authorize PSE&G to use your check to make a one-time electronic fund transfer from your account. If you do not wish to participate, call 1-800-436-PSE&G.

Electric & Gas Rate Information

For news about PSE&G's rate filing and upcoming public hearings visit www.pseg.com/pseandgfilings

Customer Service Centers

Open Monday through Friday, during the hours noted

Bayonne, 608 Broadway	8am to 4:00pm
Burlington, 501 High Street	8am to 4:00pm
Camden, 1 Port Center	8am to 4:00pm
Elizabeth, 550 N. Broad Street	8am to 4:00pm
Hackensack, 214 Hudson Street	8am to 4:00pm
Hoboken, 615 Washington Street	8am to 4:00pm
Jersey City, 35 Journal Square (Corner of Bergen Ave. & Newkirk St.)	8am to 4:00pm
Newark, 80 Park Plaza	8am to 4:00pm
New Brunswick, 317 George St.	8am to 4:00pm
West Orange, 59 Main St.	8am to 4:00pm
Passaic, 651 Main Ave	8am to 4:00pm
Paterson, 301 Main St (30 Clark St)	8am to 4:00pm
Perth Amboy, 286 State St.	8am to 4:00pm
Plainfield, 120 West Seventh Street	8am to 4:00pm
Trenton, 28 West State Street	8am to 4:00pm
Union City, 4808 Bergenline Avenue	8am to 4:00pm

Bill Form Definitions

Service Charge: A fixed monthly charge related to metering, billing and account maintenance.

Distribution Charges (Gas): Charges related to delivering gas through pipes from supply sources to the customer. These charges include a therm component, and in November through March on certain rate schedules, also include a demand component.

Bill Form Definitions (continued)

Balancing Charge (Gas): This charge reflects storage related costs associated with winter gas use. This charge is only applicable in the billing months of November through March.

Demand (Gas): The highest average daily use of gas over the most recent billing months of November to March.

Supply (Gas): Charges for customers who do not choose a competitive gas supplier are called Basic Gas Supply Service (BGSS). The charges include the cost of the natural gas as well as the cost of interstate delivery of the gas to New Jersey.

Distribution Charges (Electric): Charges related to delivering electricity through wires from supply sources to the customer. These charges include both kilowatt-hour (kWh) and demand (kW) components.

Measured Demand (Electric): The maximum use of electricity at any time during a month or monthly time period (on or off peak).

Annual Demand (Electric):

(For Rate HHS): The highest Measured Demand over the most recent 12 months.

(For Rates MD, FD, LPLS, LPLP): The highest Measured Demand in any time period in the current month.

Summer Demand (Electric): The Measured Demand (excluding off peak) in each billing month of June through September.

Societal Benefits: This charge recovers the cost of government mandated programs designed to achieve public policy goals, such as energy conservation.

Securitization Transition: This charge recovers costs and associated taxes for transition bonds and for BGS transition bonds collected by PSE&G as servicer on behalf of PSE&G Transition Funding LLC and PSE&G Transition Funding II LLC, respectively.

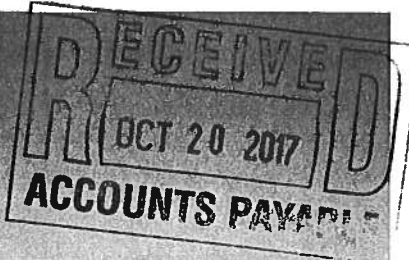
Supply Capacity (Electric): A customer's share of the generation and transmission facilities, measured in kilowatts (kW), which must be procured to serve the system annual peak usage. The customer's share is calculated from the customer's peak usage in the prior year's summer. For new customers without prior summer usage the share is calculated from connected load.

Supply (Electric): Charges for customers who do not choose a competitive electric supplier are called Basic Generation Service (BGS). The charges include the energy as well as the generation and transmission facilities necessary to produce and transmit the energy.

TDD number for the hearing impaired 1 800 225 0072



Monthly Statement
 OCTOBER 2017
 Account number 42 007 763 08



For service at

54 ORANGE RD HILLSIDE
 MONTCLAIR TWP NJ
 07042-2110

1 855-BIZ-PSEG (249-7734)
Emergencies 24 hours/7days
 Business customer service
 7 AM - 5.30 PM Mon - Fri
 Closed on weekend and Holidays

Visit our website
 www.pseg.com

Inquiries by mail
 PSE&G
 PO Box 14444
 New Brunswick NJ 08906-4444

Important Dates

Your payment for current charges
 is due October 31, 2017.

Your meter(s) are scheduled to be
 read on or about November 08.

To make a payment from a credit
 card Log In to **My Account** at
 pseg.com or call 1 888-575-6273

000106 000000282
 MONTCLAIR BD OF ED
 MONTCLAIR TWP OF
 22 VALLEY RD
 MONTCLAIR NJ 07042-2709

E = 3,713.46

Account Summary

PSE&G balance from last bill	\$5,180.69
Payment received Sep 22 - Thank You!	-2,604.30 ✓
Current PSE&G - Electric charges for 1 meter	1,193.96
Meter Product Charges	2.00
DIRECT ENERGY BUSINESS, LLC Electric Charges	2,517.50
Total Amount Due	\$6,289.85

*Sept 23, 555.97
 CK # 21686
 10/17/17*

**** SHUT-OFF NOTICE ** 1-800-357-2262 (Mon-Fri, 7:30 AM - 8:00 PM)**
Your bill is now past due. Payment of \$2,558.39 must be received by 10/31/2017 or service may be shut off. A security deposit may be required if late payments continue. A statement of customer rights and fees is shown on the reverse side.

Si en el futuro usted desea recibir la notificación de desconexión de servicio en español, por favor llame al 1-800-357-2262.

In October, Customer Service Professionals throughout the country celebrate National Customer Service Week. In honor of this week, PSE&G would like to thank you for your business, and recognize our Customer Service professionals who work hard to serve you every day.

Statement of Customer Rights

PSE&G IS SUBJECT TO THE JURISDICTION OF THE N.J. BOARD OF PUBLIC UTILITIES (BPU), 44 SOUTH CLINTON AVENUE, TRENTON, NJ 08625, 1-609-341-9188 OR TOLL FREE 1-800-624-0241. **HOWEVER, YOU SHOULD CONTACT PSE&G ON ANY BILLING OR SERVICE QUESTIONS BEFORE CALLING THE BPU. THE PSE&G PHONE NUMBER IS SHOWN ON THE FRONT OF THE BILL.**

IF YOU ARE UNABLE TO MAKE A PAYMENT, YOU MAY DISCUSS REASONABLE PAYMENT ARRANGEMENTS BY VISITING ONE OF OUR CUSTOMER SERVICE CENTERS OR BY CALLING OUR CREDIT AND COLLECTION CENTER AT 1-800-357-2262 BETWEEN THE HOURS OF 7:30 AM AND 8:00 PM (MON - FRI). IF YOU WISH TO CONTEST YOUR BILL, YOU MAY VISIT ONE OF OUR CUSTOMER SERVICE CENTERS OR CALL OUR CUSTOMER INQUIRY CENTER AT 1-800-436-7734, MON - FRI, 7:00 AM - 8:00 PM AND SAT, 7:00 AM - 5:00 PM.

YOU MAY HAVE COUNSEL OR THIRD PARTY REPRESENTATION WHEN APPEARING BEFORE PSE&G TO CONTEST A BONA FIDE DISPUTED CHARGE.

IF WITHIN FIVE DAYS A REQUEST IS MADE TO THE BPU FOR AN INVESTIGATION OF THE DISPUTED CHARGE, SERVICE WILL NOT BE DISCONTINUED BECAUSE OF NONPAYMENT OF BILLS PROVIDED ALL UNDISPUTED CHARGES ARE PAID.

YOU MAY CONTACT THE BPU TO REQUEST ASSISTANCE IN THE RESOLUTION OF A BONA FIDE DISPUTED CHARGE. YOU MAY ALSO REQUEST A FORMAL HEARING WITH THE BPU CONCERNING SUCH A DISPUTED CHARGE.

**** Additional Shut Off Information ** 1-800-357-2262 (Mon-Fri, 7:30 AM - 8:00 PM)**

A reconnection fee of \$45.00 will be charged for each service that is shut off. Service may not be restored on the same day payment is made. A fee of \$30.00 will be charged if a visit is made to collect past due bills. A late payment fee may be charged for past due bills. You can avoid a security deposit and poor credit rating by paying bills by their due date.



October 2017
 Account number 42 067 763-06
 Visit our website: www.pseg.com

PSE&G Electric

Usage	Meter 9213599
Reading Oct 10	
On-Peak actual	7052
Off-Peak1	
Off-Peak2	
Reading Sep 12	
On-Peak actual	6802
Off-Peak1	
Off-Peak2	
Multiplier	120
Total On kWh	23,860
Total Off kWh	6,186
Total kWh	30,046
Distribution Demands	
Annual Demand kW	146.00
Measured Demands	
On-Peak kW	146.00
Off-Peak2 kW	53.10
Constant	120
Supply Capacity	
Generation kW	35.04
Transmission kW	28.48

Charges	PoD ID: PE000010894968645191	Rate - LPLS
Delivery		
Service charge		\$371.68
Distribution charges		
Annual Demand	146.00 kW @ \$3.827808219	558.86
kWh - On-peak	23860 kWh @ \$0.001049036	25.03
kWh - Off-peak	6186 kWh @ \$0.001049143	6.49
Societal Benefits	30046 kWh @ \$0.007718165	231.90
Sub-Total Delivery		\$1,193.96
Total electric charges		\$1,193.96

**You are currently purchasing your electric supply from another supplier. If you had been purchasing your electric supply from PSE&G, you would have been billed \$2,147.32 for this supply. This is your Price to Compare, which varies each month depending upon your usage pattern.*

Meter Products and Services

Meter	Description	Amount
E 9213599	Elec web (internet access)	\$2.00
Total		\$2.00

DIRECT ENERGY BUSINESS, LLC

Through the CHOICE Program, you have chosen to purchase electricity from DIRECT ENERGY BUSINESS, LLC. If you have any questions, please contact them directly at 888-925-9115.

Adjustments	0.00
Current charges	2,517.50
Total DIRECT ENERGY BUSINESS, LLC Charges	\$2,517.50

Fixed Price - 30,045.384 Kwh Total @ \$0.08379/Kwh



Electronic Check Conversion

When you pay by check, you authorize PSE&G to use your check to make a one-time electronic fund transfer from your account. If you do not wish to participate, call 1-800-436-PSEG.

Electric & Gas Rate Information

For news about PSE&G's rate filing and upcoming public hearings visit www.pseg.com/pseandgfilings

Customer Service Centers

Open Monday through Friday, during the hours noted

Bayonne, 608 Broadway	8am to 4:00pm
Burlington, 501 High Street	8am to 4:00pm
Camden, 1 Port Center	8am to 4:00pm
Elizabeth, 550 N. Broad Street	8am to 4:00pm
Hackensack, 214 Hudson Street	8am to 4:00pm
Hoboken, 615 Washington Street	8am to 4:00pm
Jersey City, 35 Journal Square (Corner of Bergen Ave. & Newkirk St.)	8am to 4:00pm
Newark, 80 Park Plaza	8am to 4:00pm
New Brunswick, 317 George St.	8am to 4:00pm
West Orange, 59 Main St.	8am to 4:00pm
Passaic, 651 Main Ave	8am to 4:00pm
Paterson, 301 Main St (30 Clark St)	8am to 4:00pm
Perth Amboy, 313 Madison Ave.	8am to 4:00pm
Plainfield, 120 West Seventh Street	8am to 4:00pm
Trenton, 28 West State Street	8am to 4:00pm
Union City, 4808 Bergenline Avenue	8am to 4:00pm

Bill Form Definitions

Service Charge: A fixed monthly charge related to metering, billing and account maintenance.

Distribution Charges (Gas): Charges related to delivering gas through pipes from supply sources to the customer. These charges include a therm component, and in November through March on certain rate schedules, also include a demand component.

Bill Form Definitions (continued)

Balancing Charge (Gas): This charge reflects storage related costs associated with winter gas use. This charge is only applicable in the billing months of November through March.

Demand (Gas): The highest average daily use of gas over the most recent billing months of November to March.

Supply (Gas): Charges for customers who do not choose a competitive gas supplier are called Basic Gas Supply Service (BGSS). The charges include the cost of the natural gas as well as the cost of interstate delivery of the gas to New Jersey.

Distribution Charges (Electric): Charges related to delivering electricity through wires from supply sources to the customer. These charges include both kilowatt-hour (kWh) and demand (kW) components.

Measured Demand (Electric): The maximum use of electricity at any time during a month or monthly time period (on or off-peak).

Annual Demand (Electric):

(For Rate HTS): The highest Measured Demand over the most recent 12 months.

(For Rates MD, ED, LPLS, LPLP): The highest Measured Demand in any time period in the current month.

Summer Demand (Electric): The Measured Demand (excluding off-peak) in each billing month of June through September.

Societal Benefits: This charge recovers the cost of government mandated programs designed to achieve public policy goals, such as energy conservation.

Securitization Transition: This charge recovers costs and associated taxes for transition bonds and for BGS transition bonds collected by PSE&G as servicer on behalf of PSE&G Transition Funding LLC and PSE&G Transition Funding II LLC, respectively.

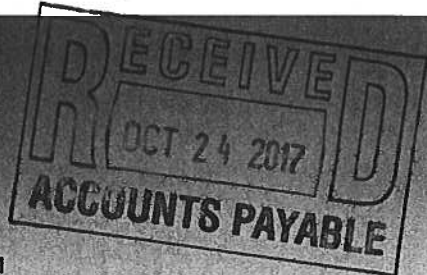
Supply Capacity (Electric): A customer's share of the generation and transmission facilities, measured in kilowatts (kW), which must be procured to serve the system annual peak usage. The customer's share is calculated from the customer's peak usage in the prior year's summer. For new customers without prior summer usage the share is calculated from connected load.

Supply (Electric): Charges for customers who do not choose a competitive electric supplier are called Basic Generation Service (BGS). The charges include the energy as well as the generation and transmission facilities necessary to produce and transmit the energy.

TDD number for the hearing impaired 1 800 225-0072



Monthly Statement
OCTOBER 2017
 Account number 42 007 764 05



000078 000000261
 MONTCLAIR BD OF ED
 MONTCLAIR TWP OF
 22 VALLEY RD
 MONTCLAIR NJ 07042-2709

E = 371557



For service at

MT HEBRON RD BRADFORD
 MONTCLAIR TWP NJ
 07042

1 855-BIZ-PSEG (249-7734)
Emergencies 24 hours/7days
 Business customer service
 7 AM - 5.30 PM Mon - Fri
 Closed on weekend and Holidays

Visit our website
 www.pseg.com

Inquiries by mail
 PSE&G
 PO Box 14444
 New Brunswick NJ 08906-4444

Important Dates

Your payment for current charges
 is due November 02, 2017.

Your meter(s) are scheduled to be
 read on or about November 10.

To make a payment from a credit
 card Log In to **My Account** at
 pseg.com or call 1 888-575-6273

Account Summary

10/17/17 \$ 3,956.76 CK 21686

PSE&G balance from last bill	\$8,134.70
Payment received Sep 22 - Thank You!	-4,230.18 ✓
Current PSE&G - Gas charges for 1 meter	120.17 G
Current PSE&G - Electric charges for 1 meter	1,256.31
Meter Product Charges	2.00
DIRECT ENERGY BUSINESS, LLC Electric Charges	2,457.26
Total Amount Due	\$7,740.26

**** SHUT-OFF NOTICE ** 1-800-357-2262 (Mon-Fri, 7:30 AM - 8:00 PM)**
Your bill is now past due. Payment of \$3,896.52 must be received by 11/2/2017 or service may be shut off. A security deposit may be required if late payments continue. A statement of customer rights and fees is shown on the reverse side.

Si en el futuro usted desea recibir la notificación de desconexión de servicio en español, por favor llame al 1-800-357-2262.

In October, Customer Service Professionals throughout the country celebrate National Customer Service Week. In honor of this week, PSE&G would like to thank you for your business, and recognize our Customer Service professionals who work hard to serve you every day.

Statement of Customer Rights

PSE&G IS SUBJECT TO THE JURISDICTION OF THE N.J. BOARD OF PUBLIC UTILITIES (BPU), 44 SOUTH CLINTON AVENUE, TRENTON, NJ 08625, 1-609-341-9188 OR TOLL FREE 1-800-624-0241. **HOWEVER, YOU SHOULD CONTACT PSE&G ON ANY BILLING OR SERVICE QUESTIONS BEFORE CALLING THE BPU. THE PSE&G PHONE NUMBER IS SHOWN ON THE FRONT OF THE BILL.**

IF YOU ARE UNABLE TO MAKE A PAYMENT, YOU MAY DISCUSS REASONABLE PAYMENT ARRANGEMENTS BY VISITING ONE OF OUR CUSTOMER SERVICE CENTERS OR BY CALLING OUR CREDIT AND COLLECTION CENTER AT 1-800-357-2262 BETWEEN THE HOURS OF 7:30 AM AND 8:00 PM (MON - FRI). IF YOU WISH TO CONTEST YOUR BILL, YOU MAY VISIT ONE OF OUR CUSTOMER SERVICE CENTERS OR CALL OUR CUSTOMER INQUIRY CENTER AT 1-800-436-7734, MON - FRI, 7:00 AM - 8:00 PM AND SAT, 7:00 AM - 5:00 PM.

YOU MAY HAVE COUNSEL OR THIRD PARTY REPRESENTATION WHEN APPEARING BEFORE PSE&G TO CONTEST A BONA FIDE DISPUTED CHARGE.

IF WITHIN FIVE DAYS A REQUEST IS MADE TO THE BPU FOR AN INVESTIGATION OF THE DISPUTED CHARGE, SERVICE WILL NOT BE DISCONTINUED BECAUSE OF NONPAYMENT OF BILLS PROVIDED ALL UNDISPUTED CHARGES ARE PAID.

YOU MAY CONTACT THE BPU TO REQUEST ASSISTANCE IN THE RESOLUTION OF A BONA FIDE DISPUTED CHARGE. YOU MAY ALSO REQUEST A FORMAL HEARING WITH THE BPU CONCERNING SUCH A DISPUTED CHARGE.

**** Additional Shut Off Information ** 1-800-357-2262 (Mon-Fri, 7:30 AM - 8:00 PM)**

A reconnection fee of \$45.00 will be charged for each service that is shut off. Service may not be restored on the same day payment is made. A fee of \$30.00 will be charged if a visit is made to collect past due bills. A late payment fee may be charged for past due bills. You can avoid a security deposit and poor credit rating by paying bills by their due date.



PSE&G Gas

Usage	Meter 2283375
Actual reading Oct 13	12727
Actual reading Sep 14	12595
Conversion to CCF	x 1.0339
CCF total	136.475
Conversion to therms	x 1.03300
Total therms	140.978

Gas Deliveries	
Bill period deliveries	509.694
Imbalance*	368.716

*See text

Charges		PoD ID: PG000010894971045191	Rate - LVG
Delivery			
Service charge			\$107.00
Distribution charge	140.978 therms @ \$0.0472414		6.66
Societal Benefits	140.978 therms @ \$0.04617740		6.51
Total Delivery			\$120.17
Total gas charges			\$120.17

A history of PSE&G's monthly Basic Gas Supply Service (BGSS) prices are located on our website at www.pseg.com.

* The Imbalance of 368.716- will be applied to your Gas Deliveries in the month of December. The amount and month applied may differ if you are switching third party suppliers or your account requires an adjustment.

PSE&G Electric

Usage	Meter 9213517
Reading Oct 12	
On-Peak actual	7485
Off-Peak1	
Off-Peak2	
Reading Sep 14	
On-Peak actual	7240
Off-Peak1	
Off-Peak2	
Multiplier	120
Total On kWh	22,056
Total Off kWh	7,270
Total kWh	29,326

Distribution Demands	
Annual Demand kW	164.30

Measured Demands	
On-Peak kW	164.30
Off-Peak2 kW	109.70
Constant	120

Supply Capacity	
Generation kW	63.94
Transmission kW	36.31

Charges		PoD ID: PE000010894972845191	Rate - LPLS
Delivery			
Service charge			\$371.68
Distribution charges			
Annual Demand	164.30 kW @ \$3.827814973		628.91
kWh - On-peak	22056 kWh @ \$0.001049148		23.14
kWh - Off-peak	7270 kWh @ \$0.001049519		7.63
Societal Benefits	29326 kWh @ \$0.007670668		224.95
Sub-Total Delivery			\$1,256.31
Total electric charges			\$1,256.31

*You are currently purchasing your electric supply from another supplier. If you had been purchasing your electric supply from PSE&G, you would have been billed \$2,297.15 for this supply. This is your Price to Compare, which varies each month depending upon your usage pattern.



P:\MAIL\JBF_0000\9_MK_110010000

Meter Products and Services

Meter	Description	Amount
E 9213517	Elec web (internet access)	\$2.00
Total		\$2.00

DIRECT ENERGY BUSINESS, LLC

Through the CHOICE Program, you have chosen to purchase electricity from DIRECT ENERGY BUSINESS, LLC. If you have any questions, please contact them directly at 888-925-9115.

Adjustments	0.00
Current charges	2,457.26
Total DIRECT ENERGY BUSINESS, LLC Charges	\$2,457.26

Fixed Price - 29,326.374 Kwh Total @ \$0.08379/Kwh

Electronic Check Conversion

When you pay by check, you authorize PSE&G to use your check to make a one-time electronic fund transfer from your account. If you do not wish to participate, call 1-800-436-PSEG.

Electric & Gas Rate Information

For news about PSE&G's rate filing and upcoming public hearings visit www.pseg.com/pseandqfilings

Customer Service Centers

Open Monday through Friday, during the hours noted.

Bayonne, 608 Broadway	8am to 4:00pm
Burlington, 501 High Street	8am to 4:00pm
Camden, 1 Port Center	8am to 4:00pm
Elizabeth, 550 N. Broad Street	8am to 4:00pm
Hackensack, 214 Hudson Street	8am to 4:00pm
Hoboken, 615 Washington Street	8am to 4:00pm
Jersey City, 35 Journal Square (Corner of Bergen Ave. & Newkirk St.)	8am to 4:00pm
Newark, 80 Park Plaza	8am to 4:00pm
New Brunswick, 317 George St.	8am to 4:00pm
West Orange, 59 Main St.	8am to 4:00pm
Passaic, 651 Main Ave	8am to 4:00pm
Paterson, 301 Main St (30 Clark St)	8am to 4:00pm
Perth Amboy, 286 State St.	8am to 4:00pm
Plainfield, 120 West Seventh Street	8am to 4:00pm
Trenton, 28 West State Street	8am to 4:00pm
Union City, 4808 Bergenline Avenue	8am to 4:00pm

Bill Form Definitions

Service Charge: A fixed monthly charge related to metering, billing and account maintenance.

Distribution Charges (Gas): Charges related to delivering gas through pipes from supply sources to the customer. These charges include a therm component, and in November through March on certain rate schedules, also include a demand component.

Bill Form Definitions (continued)

Balancing Charge (Gas): This charge reflects storage related costs associated with winter gas use. This charge is only applicable in the billing months of November through March.

Demand (Gas): The highest average daily use of gas over the most recent billing months of November to March.

Supply (Gas): Charges for customers who do not choose a competitive gas supplier are called Basic Gas Supply Service (BGSS). The charges include the cost of the natural gas as well as the cost of interstate delivery of the gas to New Jersey.

Distribution Charges (Electric): Charges related to delivering electricity through wires from supply sources to the customer. These charges include both kilowatthour (kWh) and demand (kW) components.

Measured Demand (Electric): The maximum use of electricity at any time during a month or monthly time period (on or off-peak).

Annual Demand (Electric):

(For Rate HTS): The highest Measured Demand over the most recent 12 months.

(For Rates MD, ED, LPLS, LPLP): The highest Measured Demand in any time period in the current month.

Summer Demand (Electric): The Measured Demand (excluding off-peak) in each billing month of June through September.

Societal Benefits: This charge recovers the cost of government mandated programs designed to achieve public policy goals, such as energy conservation.

Securitization Transition: This charge recovers costs and associated taxes for transition bonds and for BGS transition bonds collected by PSE&G as servicer on behalf of PSE&G Transition Funding LLC and PSE&G Transition Funding II LLC, respectively.

Supply Capacity (Electric): A customer's share of the generation and transmission facilities, measured in kilowatts (kW), which must be procured to serve the system annual peak usage. The customer's share is calculated from the customer's peak usage in the prior year's summer. For new customers without prior summer usage the share is calculated from connected load.

Supply (Electric): Charges for customers who do not choose a competitive electric supplier are called Basic Generation Service (BGS). The charges include the energy as well as the generation and transmission facilities necessary to produce and transmit the energy.

TDD number for the hearing impaired 1 800 225-0072



